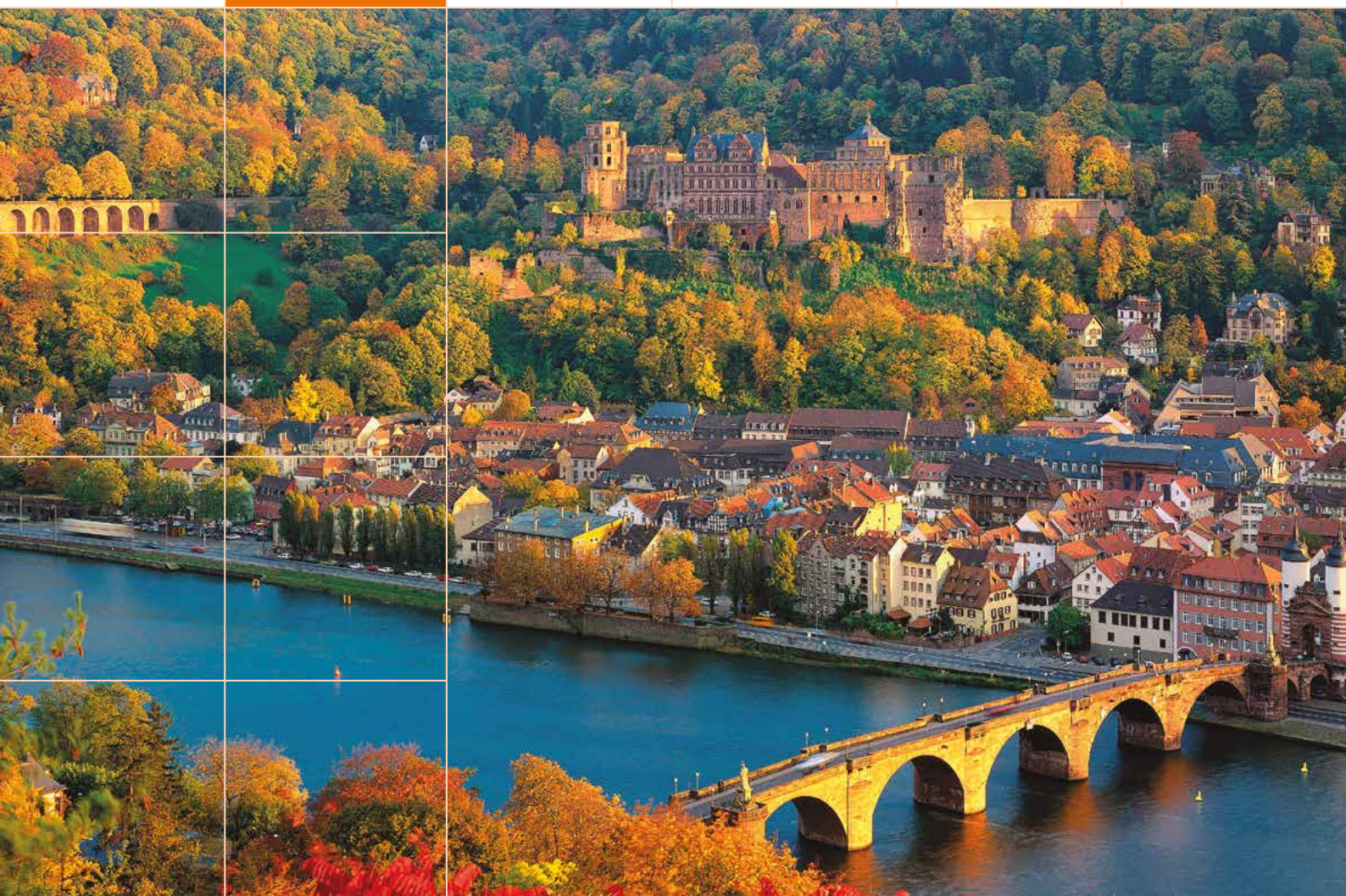


F+U Academy of Languages



2020 Heidelberg

Online and classroom courses



Guarantee for all levels: Online and classroom courses

Discounts for bookings until 16.08.2020

- ▶ 10% off intensive and evening courses
- ▶ Dormitories: book 6 months, pay 4 months



Academy of Languages
Heidelberg · Berlin

Heidelberg - at the heart of Europe	3	Group packages	26
Heidelberg - city of romanticism and science	5	German and English courses	26
F+U Academy of Languages Heidelberg	7	Accommodation and meals	26
Safety instructions	8	Transfer, cultural programme	27
Key information	9	Additional services, special courses, cultural programme	28
Course levels	10	Location map (halls of residence, apartments)	30
International test centre	11	Host family accommodation, transfer, parking	32
Individual courses, IT training	12	Transfer to accommodation, parking	32
Live online courses worldwide anytime	14	Guest houses, holiday homes, hotels, youth hostel	42
Intensive courses German, English		Meals	32
Individual training, Closed groups		Halls of residence, apartments - general information	33
Online Training	15	Accommodation prices	34
One World Language Courses		Halls of residence: categories and locations	35
Evening courses German, English		Education partners	36
Educational leave, lessons on tour	17	International Boarding School	36
Intensive courses in Heidelberg	18	International Baccalaureate®	36
German as a foreign language	18	Heidelberg Private School Centre	36
German as a foreign language plus English	19	University of Applied Sciences for Business, Technology and Culture (hwtk)	37
Learners' home countries: German courses	19	International University of Cooperative Education (iba)	37
English	20	Heidelberg Technical College Centre	37
Learners' home countries: English courses	20	F+U Studienkolleg preparatory college	38
Junior programme	22	(accreditation in progress)	38
German and English summer courses (9-15 years)	22	Preparation for German Studienkolleg entrance exams	38
Language course, accommodation, transfer	22	State-recognised vocational college	39
German winter courses for young learners (12-17 years)	24	for foreign languages	39
English holiday courses (6-15 years)	25	F+U course/exam planner and events calendar	40
German and English courses - all year (3-10 years)	25	Participant statistics	43
Russian academy for children (1-14 years)	25	Addresses, service numbers	44



F+U Rhein-Main-Neckar gGmbH
Academy of Languages

Hauptstrasse 1
D-69117 Heidelberg
Tel. +49 6221 7050-4048
Fax +49 6221 23452

languages@fuu.de

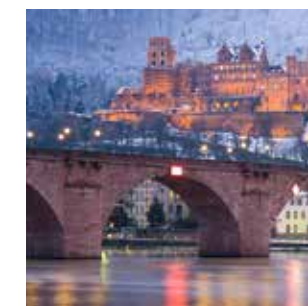
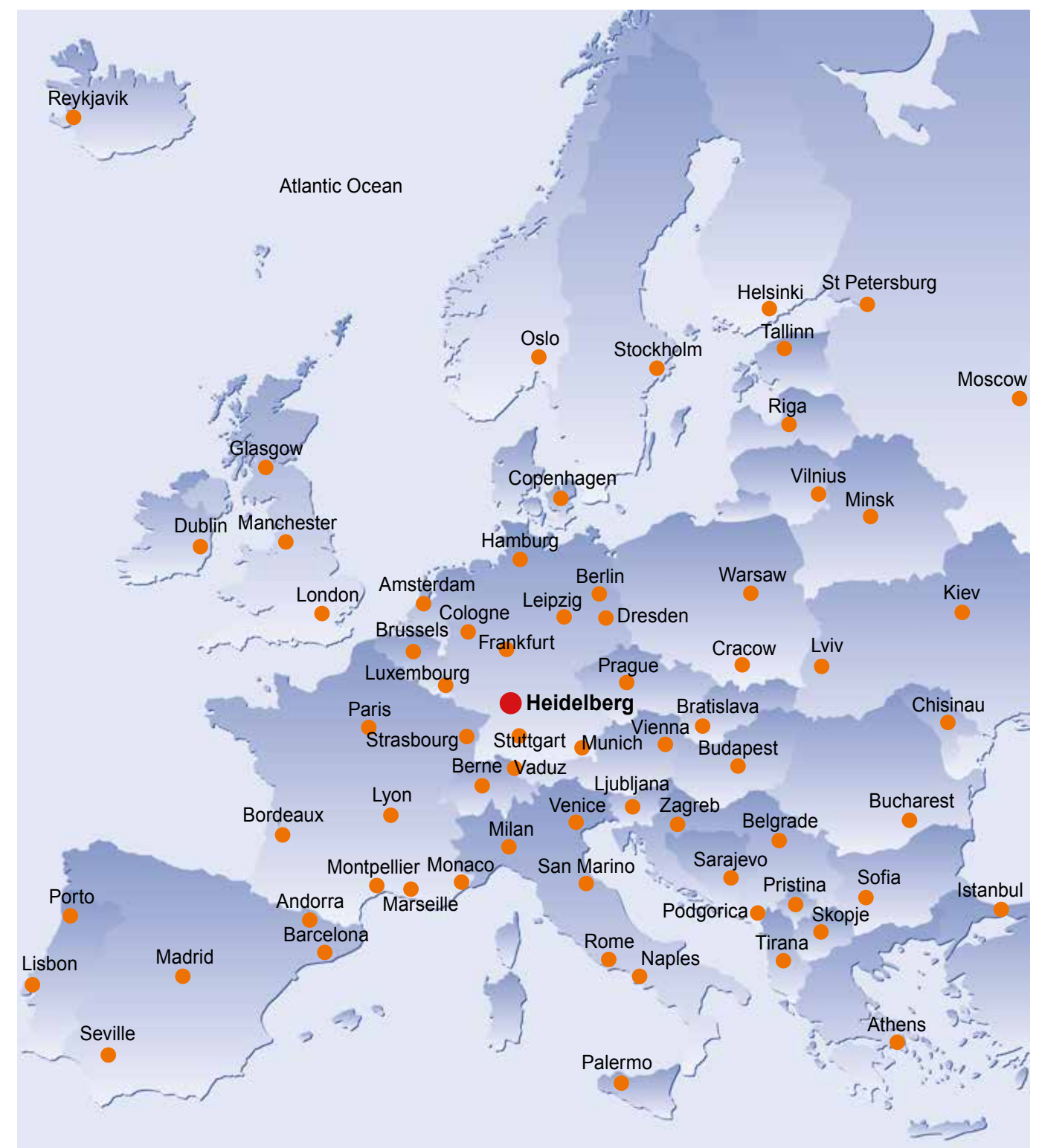
Telephone service (24/7): +49 6221 9120-38

www.fuu-heidelberg-languages.eu

www.fuu.de



Test centre, memberships





Castle illuminations with fireworks on the Old Bridge

Heidelberg, once the capital of the Palatinate and the spiritual centre of Calvinism, nestles in the picturesque Neckar valley and is known for its particularly mild climate. Over the years, Heidelberg's beauty has attracted a number of poets, painters and scientists. In the early 19th century the city on the Neckar became the most important centre of German late romanticism, and is inextricably linked with the poets Arnim, Brentano, Goethe and Eichendorff.

The **Ruprecht-Karls University of Heidelberg** was founded in 1386 and is Germany's oldest university. In 2019 it once again held its leading position among the best universities in the country and continues to be highly ranked worldwide. The 2019 **Shanghai Ranking** of world universities named Heidelberg the top university in Germany for the sixth time in succession and according to the **World University Ranking 2019** it is one of the best in the world. Heidelberg's reputation for excellence was confirmed again in July 2019.

Many monuments bear witness to the Neckar city's diverse history. Overlooking the river Neckar some 70 metres below is the city's most famous landmark, the Elector's **castle**, standing on the slope of Königstuhl on its eponymous mountain. Its ruins are one of the most impressive sights on any visit to Germany (in 2019, the castle was among Germany's most popular destinations for international holidaymakers). Visitors climbing up to the castle first pass through the gate into the famous '**Hortus Palatinus**' garden, created at the beginning of the 17th century. From the castle garden, there is a breathtaking view of Heidelberg, including the **Philosophers' Walk** on the opposite bank of the Neckar. Fascinating buildings dating back to a variety of epochs surround the inner courtyard. Situated in the Elector's wine cellar is the world's largest barrel, which was once filled with wine. It has rarely failed to impress - except in the case of **Perkeo**, the barrel's gnome-like guard. Once, when asked if he could drink the barrel dry, his answer was a nonchalant 'perché no' - why not? - which is how he came to earn his name.

The baroque townhouses and their ornamental facades and doorways are a striking feature of any walk round the **Old Town**. The heart of the Old Town is the market place, between the Evangelical **Church of the Holy Ghost** and the grand renaissance building 'Zum Ritter'. The old alleyways leading away from the church are lined with pubs and restaurants. Spanning the Neckar is the **Old Bridge**, one of the most beautiful stone bridges in Germany. Not far from University Square is the **Jesuit Church**. Built in the early 18th century and adorned with several figures of the Virgin Mary and saints, the church is the Old Town's symbol of Catholicism, which regained its foothold in Heidelberg following the upheaval of the Thirty Years War and the Palatinate War of Succession.

The wooded hills around Heidelberg cloak the city in a stunning green. There is also plenty to explore in the surrounding area, including the Neckar valley forts, the German wine route, the ancient cultivated landscape along the Upper Rhine and the mountains of the Odenwald and Black Forest.

Proximity to Frankfurt, Karlsruhe/Baden-Baden and Stuttgart airports means Heidelberg is easily accessible to its guests from all over the world.



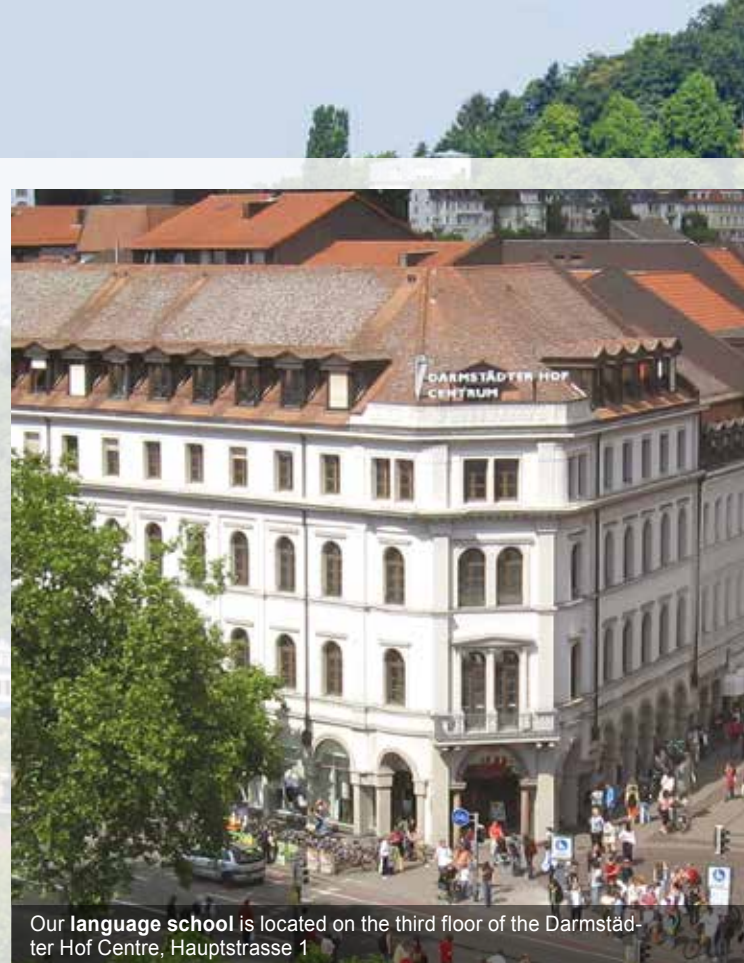
The name Heidelberg is synonymous with tradition and romanticism, but it also stands for a modern, world-class **science and business location**. Heidelberg is home to the tradition-steeped university, the Academy of Sciences, the German Cancer Research Centre (DKFZ), four Max Planck institutes, the European Laboratory for Molecular Biology (EMBL), the Centre for Asian and Transcultural Studies (CATS), the Print Media Academy of Heidelberger Druckmaschinen, the SAS Institute and several research centres belonging to international companies. Such a concentration of the sciences is unparalleled in Germany and forms the foundation for a dynamic, science-orientated economy that elevates Heidelberg - despite a population of just 160,000 - to its position as one of Germany's leading economic centres.

Heidelberg is also one of Germany's leading **cultural centres**, as demonstrated by its wealth of museums and theatres. Literature is everywhere in the city and since December 2014 Heidelberg has been a designated 'UNESCO City of Literature'. Together with the neighbouring cities in the Rhine-Neckar metropolitan area (which also includes Mannheim, Ludwigshafen, Speyer, Schwetzingen and Worms), Heidelberg offers an array of nationally significant cultural events. See also the events calendar for the Rhein-Neckar metropolitan region on page 8.





The Church of the Holy Ghost, Heidelberg's largest church, built between 1398 and 1515



Our language school is located on the third floor of the Darmstädter Hof Centre, Hauptstrasse 1



The Old Bridge (Karl-Theodor Bridge) connects the Old Town with the Neuenheim district.

International language school

The F+U language school is situated in the historic centre of the university city, just a few metres from the Neckar. The school building offers fantastic views of the Old Town, the castle and the Neckar valley.

Today, the F+U Academy of Languages is one of the largest language schools in Germany. Every year, over 10,000 language learners and exam candidates participate in the language courses and examinations, and learners from over 100 countries take part in the German courses. Thanks to its **internationality**, the school gives learners a unique opportunity to meet other people and find out more about their language and culture, and to put new language skills into practice - between classes or when enjoying a break in the atrium, for example, or taking part in the cultural and sporting activities we offer several times a week. With 70 multimedia-equipped classrooms (up to 85 in summer), three Internet rooms with fifty PCs, free Internet access and Wi-Fi and a central location, the F+U Academy of Languages offers everything you need for an exceptional learning experience in Heidelberg.

Several halls of residence with around 500 rooms, a boarding school, apartments, a school-owned hotel and a number of host families offer year-round **accommodation** to learners from all over the world.

Specialising in German as a foreign language, the F+U Academy of Languages is one of the world leaders in the provision of German courses, whether in the form of intensive lessons in the mornings and afternoons, extra-occupational evening courses or individual training. We offer online training to give learners who are unable to join classes at the school the opportunity to improve their language skills.

As an **international test centre**, the Academy of Languages stands for exceptional quality in language teaching. Alongside the best-known assessments such as TOEFL®, IELTS (International English Language Testing System) and TestDaF (Test Deutsch als Fremdsprache), the language school offers the following examinations: telc (The European Language Certificates, including C1 Hochschule, Zertifikat Deutsch, Zertifikat Deutsch für den Beruf), TOEIC®, LCCI (London Chamber of Commerce and Industry) exams, ECDL (the European Computer Driving Licence), TestAS (aptitude assessment for international university applicants), WiDaF (Test Deutsch in der Wirtschaft) and OnSet (online placement test for German and English).

The **intensive and evening courses** are offered year round. Popular with university applicants and learners from all over the world who are interested in language and culture, the courses are also attended by employees of international companies and research institutes such as SAP, Lufthansa, Heidelberger Druckmaschinen, HeidelbergCement, Siemens, Daimler, NEC, Heipha, Brunel, BASF, EMBL, HITS, the DKFZ, Heidelberg University and many more businesses and scientific institutes. International sports stars from the region's well-known sports clubs, including 1899 Hoffenheim, Rhein-Neckar-Löwen, USC Heidelberg and SV Sandhausen, participate in the Academy's German courses.

In the F+U Academy of Languages online training programme learners from all over the world learn German, English and other languages and prepare for language exams. Native-speaker trainers teach learners in the virtual classroom. F+U Academy of Languages tailors the course times and content to the needs of the learner, whether in individual training or in large groups.

The state-recognised vocational college for foreign languages is an outstanding feature of the Language Academy. The college offers full-time programmes leading to the following qualifications: Fremdsprachenkorrespondent*in (Foreign Language Correspondence Clerk), Europasekretär*in (European Secretary), Welthandelskorrespondent*in (Multilingual Correspondence Clerk) and Übersetzer*in (Translator). F+U is the only education provider in southern Germany to offer state-recognised vocational language training for Japanese. Recognised status has also been awarded for Chinese, English, French, Spanish and Russian.

The F+U Academy of Languages offers internship programmes within the Erasmus+ framework. This EU programme gives young people the chance to participate in a language course in Heidelberg, and to then complete a commercial internship.

The F+U Academy of Languages rounds off its range of courses with the organisation of **language tours** and with the International Prep School (preparation for the external Feststellungsprüfung university entrance exam).

Why F+U? - Top features at a glance

- **Extensive educational competence:** F+U operates the University of Applied Sciences for Business, Technology and Culture (hwtk), the International University of Cooperative Education (iba), bilingual schools (primary school and Gymnasium), a Realschule and a number of colleges specialising in vocational and foreign language training. Since September 2017 F+U has also offered the International Baccalaureate® diploma programme for international students.
- **International boarding school:** accommodation for long-term learners under the age of 18; in July and August also at our Youth Campus 24.
- **A dedicated 24/7 telephone service number**
- **Test centre** for TOEFL®, IELTS, TestDaF, TestAS, TOEIC®, telc, LCCI, OnSET, ECDL and other exams and tests.
- **State-recognised vocational college for foreign languages.**
- **Affiliations and partnerships:** FaDaF (Fachschaft Deutsch als Fremdsprache); FDSV (German Association of Language Tour Operators), VDP (Federal Association of Private Schools in Germany); AOK (Allgemeine Ortskrankenkasse); Eurohodip (European Hotel Diploma); DRV (German Travel Association); Olympiastützpunkt Rhein-Neckar e.V. (Olympic Training Centre); German Youth Hostel Association.
- Year-round **guaranteed provision** for all language courses.
- **Lessons on tour:** identical language programmes in Berlin and Heidelberg.
- **Large selection of rooms** in our own halls of residence, apartments, with host families and in F+U's Bayrischer Hof hotel.
- **International atmosphere** (learners from 116 countries in 2018).
- **Central location** in one of Germany's most beautiful cities.
- **Great value for money.**



Six reasons why students should feel safe at our school

We have been following official guidelines to the letter, in order to make sure that all students and staff members stay healthy.

1. We have hand sanitizer at your disposal in the hallways, and all student accommodation.
2. In our spacious classrooms we can guarantee the mandatory 1.5 metres (5 ft) distance between you and your classmates.
3. In the hallways, it is mandatory to wear a mask. All new students will receive a set of masks from us when they arrive.
4. We guarantee vigorous cleaning and disinfection of tables and door handles multiple times a day. We also make a point of airing the classrooms regularly.



5. To avoid crowds in the hallways, we have implemented staggered break times for all classes. We also offer on-demand in-person appointments with staff members for consultations, buying course books, picking up letters and so on.
6. Last but not least, we have a wide selection of online courses available to meet the needs of learners who are still unable to travel or who would prefer to take classes from the comfort of their dormitories.



School, lessons, holidays

- **Lesson times:** Monday-Friday: 07.15-21.00; Saturday: 10.00-16.00; Sunday: on request.
- **School administration opening hours:** Monday-Friday: 07.30-20.00 (Mondays and Thursdays until 20.15); Saturday: 10.00-16.00.
- Our courses are taught by **experienced** and **highly qualified** teachers.
- **One teaching hour (TH) is 45 minutes.**
- **Minimum age (group courses):** 16 years old; junior courses: 6 years old (German and English courses).
- **Class size:** See the respective course description.
- **Guaranteed provision, minimum participant numbers:** Courses are held even without the minimum number of learners (4 people). The number of hours booked is reduced by 50%. To compensate, learners can participate in another group course. Alternatively we can offer you a voucher for the number of reduced teaching hours; the voucher is valid indefinitely and is also transferable.
- **Public holidays (no lessons):** 01.01, 06.01, 10.04, 13.04, 01.05, 21.05, 01.06, 11.06, 25.12 (missed lessons can be taken at the end of the course, provided that a written request is received no later than 14.30, one day before the respective public holiday).
- **School holiday:** Intensive courses and individual lessons are offered all year; learners can request an individual break in learning. Evening course learners have a break from 21.12.2020 to 03.01.2021 (see also 'Individual holiday').
- **Individual holiday** (the course booked is extended by the length of the holiday, as requested in writing and confirmed by the school):
 - **Intensive courses:** Two weeks (Monday-Friday) per quarter (12 course weeks); requests must be received no later than Thursday, 16.00, before the start of the holiday. The minimum holiday duration is one complete week (Monday-Friday). Please don't forget to extend your accommodation contract where necessary.
 - **Evening courses:** Requests must be received no later than 16.00 on the course day.
 - **Individual lessons, closed small groups, company training:** Cancellation of the scheduled lesson without charge is possible if notification is received by 15.00 on the previous day. Monday lessons must be cancelled no later than 14.00 on the previous Saturday.
- **Main course/premium course:** Lessons are differentiated by level according to the Common European Framework of Reference for Languages (see page 10). Lessons focus on progression in all key standard language skills (reading comprehension, listening comprehension, writing and speaking). For German courses from level C1, specific examination preparation is offered to complement the standard courses.
- **Module course:** These courses can be taken in combination with the main course or as a stand-alone language course. It is possible to switch between the individual modules.
- **International test centre:** At F+U you have the opportunity to take internationally recognised tests including TOEFL®, TestDaF, telc, TestAS, LCCI, TOEIC®, OnSet, ECDL and IELTS.
- The language courses are **professionally orientated or prepare for higher education** and lead to an internationally-recognised language certificate.
- The school has **barrier-free** access and an **accessible WC** is also available.
- Accommodation for learners under the age of 18 is available in our **boarding school**; our **Youth Campus 24** is also available in July and August.

Course transfer, location transfer, course cancellation

- **Applications to change the course level or module** must be received by the school administration office by Thursday, 16.00, for the subsequent week.
- **Change of course location:** Unless booked before the start of the course, a fee of €100 is payable for changing the course location to our language school in Berlin. Applications to change the course location must be received at least two weeks in advance.
- **Cancellation of the course** is possible without charge until two weeks before the start of the course, after which the following cancellation charges apply: one week before the start of the course: €50; by Friday, 12.00, before the start of the course: €100; after this notice period but before the start of the course: the registration fee plus the course fee for one week's/month's course or, in the case of individual lessons, the course fee for two individual teaching hours.
- **After the start of the course, cancellation of the course or reduction** in the number of lessons is possible only in cases prescribed by law (see our General Terms and Conditions).
- **Cancellation of accommodation booked through F+U** is possible with four weeks' notice (for further regulations see from page 33 and our General Terms and Conditions).

Fees, discounts

- **Registration fee (for the first course only):** €40 (for 2 people: €25 / person; for 3 people: €20 / person; for 4 or more people: €15 / person).
- **Discounts:** All discounts are valid for joint registrations only. Discounts **cannot be accumulated**. You will find information about discounts for the various programmes on the respective course pages.
- The quoted **discounts** for booking a larger number of course hours only apply for pre-payment in full.
- **Free additional services:** Placement test, progress tests, use of the student PCs (3 computer rooms with 50 PCs), Wi-Fi, certificate of participation, documentation for authorities, student ID, organisation of language tandems, orientation event.
- **Course materials:** Two books are required for each course level (between €35 and €60); the books can also be borrowed for a fee plus deposit. Learning materials for junior courses are included in the course fee.
- The **prices and services** quoted in this brochure are valid until the publication of a new pricelist. Errors excepted.
- **Only the information specified in the German and English versions is authoritative.** All other translations are solely for the purpose of orientation in the respective language.
- **Non-profit education provider:** The majority of F+U's services are exempt from Value Added Tax..

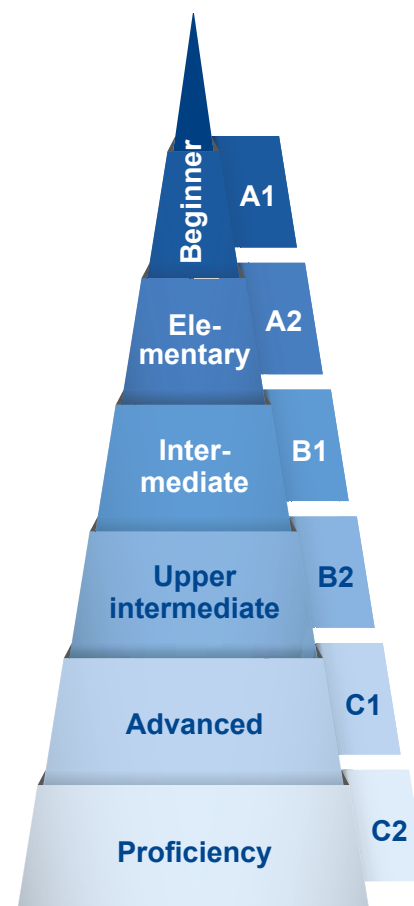
Major discount promotions 2020

- **For bookings until 16.08.2020**
- **Intensive and evening courses (online and classroom):** 10% discount
- **Residences:** book six months and pay only four
- **For bookings until 31.12.2020**
- **No registration fee for online courses.**

Training an higher education with F+U see from page 36ff.

Common European Framework of Reference for Languages (CEFR)

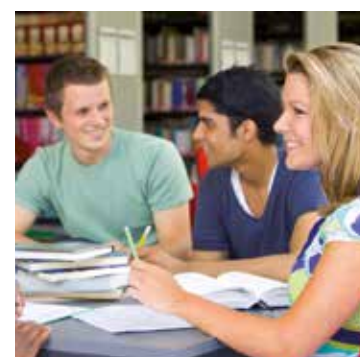
CEFR levels	TH per level	Language certificates			Course duration (one course level)
		English	German	CH, FR, IT, JP, RU, SP	
A1	160	English A1, LCCI-Preliminary 1, TOEIC® 10-120¹	Start Deutsch 1	Français A1, Italiano A1, Russian A1, Diploma de Español A1	One course level consists of 160 TH, which - regardless of the intensity of the course booked - can be completed in six to eight weeks, on condition of regular attendance and follow-up of course content.
A2	160	English A2, LCCI-Preliminary 2, TOEIC® 120-225¹	Start Deutsch 2	Français A2, Italiano A2, Russian A2, Diploma de Español A2	
B1	160	English B1, B1 Business, LCCI-1, TOEIC® 226-550¹, TOEFL® 57-86	Zertifikat Deutsch, Deutsch-Test für Zuwanderer	FSK² (CH, JP, RU) Français B1, Italiano B1, Russian B1, Diploma de Español Inicial B1	
B2	160	English B2, B2 Business, LCCI-2, TOEIC® 551-785¹, TOEFL® 87-109	Deutsch B2, B2 Beruf, B1/B2 Pflege, TestDaF 3 (B2.1-B2.2), DSH 1	FSK² (FR +SP) Français B2, Italiano B2, Russian B2, Diploma de Español Intermedio B2	
C1	160	FSK² English C1, LCCI-3, TOEIC® 786-945¹, TOEFL® 110-120	Deutsch C1, C1 Hochschule, C1 Beruf, B2/C1 Medizin, TestDaF 4 (B2.2-C1.1), TestDaF 5 (C1.1-C1.2), DSH 2	Français C1, Diploma de Español Superior C1	For individual lessons the total number of hours required to complete a course level is reduced by about 50%.
C2	400	Translator, English C2, LCCI-4, TOEIC® 946-990¹	DSH 3, Deutsch C2	Translator, Français C2, Diploma de Español Superior C2	




¹The test scores indicated refer to Listening and Reading competence in the TOEIC® examination.

²FSK = programme leading to qualification as a state-recognised Foreign Language Correspondence Clerk, European Secretary or Multilingual Correspondence Clerk (Fremdsprachenkorrespondent*in, Europasekretär*in, Welthandelskorrespondent*in)

CEFR Levels	Listening	Reading	Speaking	Writing
A1	Can understand simple sentences	Can understand simple sentences	Can communicate in short phrases	Can produce short, simple postcards
A2	Can understand the overall meaning of short, simple, clear messages	Can read short, simple texts, e.g. personal correspondence	Can communicate in sentences in everyday situations	Can produce short, simple notes, messages and personal letters
B1	Can understand important information regarding work, free time, etc.	Can comprehend text written in everyday language	Can participate in conversations about family, hobbies and work	Can produce simple, connected text on familiar themes
B2	Can follow lengthy statements and most TV programmes	Can understand newspaper articles and literary prose	Can communicate fluently and spontaneously	Can produce detailed texts and effectively present an argument
C1	Can understand lengthy statements and TV programmes without great effort	Can comprehend complex and literary texts	Can express thoughts fluently, spontaneously and precisely	Can produce clear, well-structured texts on complex subjects
C2	Can understand complex language with ease, also when spoken quickly	Can comprehend any text with ease	Can participate effortlessly in all conversations and discussions	Can produce and discuss sophisticated and complex texts



Examination	Language(s)	Description	2020 dates	Fees¹
TestDaF Test Deutsch als Fremdsprache	German	Required for enrolment at German universities (equivalent to DSH)	13.02, 22.04, 03.06, 22.07, 10.09, 10.11	€ 195
telc The European Language Certificates	English, French, Russian, (other languages on request)	Certificate of foreign language skills A1-A2, B1, B2, B1/B2/C1 + Beruf	11.01, 08.02, 07.03, 04.04, 09.05, 13.06, 11.07, 08.08, 12.09, 10.10, 14.11, 12.12 More dates on request	From € 160 (€ 50 supplement for express marking)
telc C1 Hochschule	German	Certificate of foreign language skills Telc C1 Hochschule is equivalent to DSH and TestDaF	11.01, 08.02, 07.03, 04.04, 09.05, 13.06, 11.07, 08.08, 12.09, 10.10, 14.11, 12.12 Additional dates for C1 Hoch- schule: 27.03, 24.04, 29.05, 26.06, 31.07, 28.08	From € 160 (€ 50 supplement for express marking)
telc B1/B2 Pflege B2/C1 Medizin	German	Certificate of specialist language competence required by qualifica- tion recognition authorities and medical institutes	Dates on request	From € 160 (supplement for express marking)
TestAS Test for Academic Studies	German or English	Aptitude test for international stu- dents entering higher education; not yet obligatory	03.03, 25.04, 06.06, 24.10	€ 135
onSET	German or English	Internet test (A2-C1), result avail- able worldwide on demand	18.01, 15.02, 14.03, 25.04, 16.05, 20.06, 18.07, 15.08, 19.09, 17.10, 14.11, 12.12	€ 22.50 (minimum of 3 participants)
Test WiDaF® Test Deutsch als Fremdsprache in der Wirtschaft	German	Standardised, business-focused German test (A2-C2)	Dates on request	€ 180
TOEFL iBT®	English	Evidence of language compe- tence required for admission to higher education, especially BA, MA, BSc, BEng, MSc, MBA programmes.	20.06, 27.06, 11.07, 18.07, 25.07, 08.08, 22.08, 29.08, 19.09, 17.10, 24.10, 07.11, 21.11, 05.11, 12.12, 19.12	US\$ 245
TOEFL Junior®	English	Assessment and certification of current English competence of school pupils; admission require- ment for some school exchange programmes.	Dates on request	€ 180
TOEIC®	English	The world's most popular test of English for business purposes.	Listening & Reading and Speaking & Writing: Dates on request	€ 180 each (supplement for express marking)
LCCI - London Cham- ber of Commerce and Industry	English	Test of professional English	Dates on request	From € 135 € 100 supplement for individual on-demand test date
IELTS - International English Language Testing System	English 	Certificate of English language skills required for higher education, migration and work.	04.01, 01.02, 08.02, 30.05, 06.06, 13.06, 11.07, 18.07, 25.07, 29.08, 05.09, 12.12, 19.12	€ 226
Foreign Language Correspondence Clerk	German, English, Span- ish, French, Japanese, Chinese, Russian and more	State recognition for Chinese English, French, Japanese, Rus- sian and Spanish.	Start of programme: 14.09.2020	€ 150 per language, € 150 for the secre- tarial examination
European Secretary	English, Spanish, French	Examinations are available for fur- ther languages, for example the examinations offered by the IHK. Further information on request.		
Multilingual Corre- spondence Clerk	English, Spanish, French + Japanese, Russian or Chinese			
Translator	English, Spanish, French and more			
ECDL European Computer Driving Licence	IT	Certificate of IT competence; seven modules	Dates on request	€ 30 per module plus € 60 for a Skills Card
In-house language test	German	a) F+U learners: from € 35. b) external learners: € 95 (incl. registration fee).		

¹Status September 2019

Individual lessons, company training

- **Registration fee (for the first course only):** €40 (for 2 people: €25 / person; for 3 people: €20 / person; for 4 or more people: €15 / person)
- **Family discount** (minimum one parent and one child): 10% off the course fees
- **Please see page 9 for further information.**
- **The benefits at a glance:**
 - No registration fee when booking **two trial lessons** (registration is payable from the third teaching hour).
 - No charge for **lesson cancellation** if written notification is received by 15:00 the previous day (languages@fuu.de). Monday lessons must be cancelled no later than the previous Saturday, 14.00.
 - **Teaching hours:** Monday-Friday: 07.15-21.00; Saturday: 10:00-16:00.
 - Lesson **structure and content** are tailored to your requirements.
 - You can form a free **language tandem** with our German course learners from England, the USA, Japan, China, France, Italy, Russia, Brazil, Spain and several other countries.
- **Individually-orientated lessons in large groups:** We will be pleased to provide a special quotation
- **Languages offered:** Arabic, Brazilian Portuguese, Bulgarian, Chinese, Croatian, Czech, Dutch, English, French, Georgian, German, Greek, Hungarian, Italian, Japanese, Polish, Portuguese, Romanian, Russian, Serbian, Spanish, Swedish, Turkish, Ukrainian (further languages on request).
- **Language groups:**
 - **Language group I:** English, French, German, Italian, Polish, Russian, Spanish
 - **Language group II:** Greek, Croatian, Turkish
 - **Language group III:** All other languages
- **Specialist language I:** Business, literature, examination preparation, translation training.
- **Specialist language II:** Medicine, care professions, technology, cost-performance analysis, accounting, preparation for the translator examination.
- **Supplementary charges:**
 - Lessons outside the usual lesson hours (see above): 25%.
 - In-house training: 20% supplement + € 0.70 / km (transport costs incl. travel time).



Individual lesson ¹	Language group I			Language group II			Language group III		
	Standard	Specialist I	Specialist II	Standard	Specialist I	Specialist II	Standard	Specialist I	Specialist II
2 trial lessons ²	€ 30	€ 32	€ 35	€ 32	€ 35	€ 37	€ 35	€ 37	€ 42
3-30 TH	€ 26	€ 28	€ 34	€ 28	€ 30	€ 36	€ 30	€ 36	€ 40
31-99 TH	€ 25	€ 27	€ 33	€ 27	€ 29	€ 35	€ 29	€ 35	€ 39
From 100 TH	€ 23	€ 25	€ 31	€ 25	€ 27	€ 33	€ 27	€ 33	€ 38
Duo lesson ^{1, 3}	Language group I			Language group II			Language group III		
	Standard	Specialist I	Specialist II	Standard	Specialist I	Specialist II	Standard	Specialist I	Specialist II
2 trial lessons ²	€ 35	€ 37	€ 40	€ 37	€ 40	€ 42	€ 40	€ 42	€ 48
3-30 TH	€ 30	€ 32	€ 38	€ 32	€ 34	€ 40	€ 34	€ 40	€ 46
31-99 TH	€ 29	€ 31	€ 37	€ 31	€ 33	€ 39	€ 33	€ 39	€ 45
From 100 TH	€ 27	€ 29	€ 35	€ 29	€ 31	€ 37	€ 31	€ 37	€ 44
Small group course (3-6) ^{1, 3}	Language group I			Language group II			Language group III		
	Standard	Specialist I	Specialist II	Standard	Specialist I	Specialist II	Standard	Specialist I	Specialist II
2 trial lessons ²	€ 40	€ 42	€ 46	€ 42	€ 45	€ 48	€ 45	€ 48	€ 54
3-30 TH	€ 37	€ 39	€ 45	€ 39	€ 41	€ 47	€ 41	€ 47	€ 52
31-99 TH	€ 36	€ 38	€ 44	€ 38	€ 40	€ 46	€ 40	€ 46	€ 51
From 100 TH	€ 34	€ 36	€ 42	€ 36	€ 38	€ 44	€ 38	€ 44	€ 50

¹The stated prices are per **teaching hour** (TH, 45 minutes).

²No **registration fee** charged.

³These are closed groups: book a course with **friends** or **colleagues** with the same language level and share the cost. Please see from page 26 for our offers for closed groups of seven or more people.

IT training, ECDL (European Computer Driving Licence)

Registration fee (for the first course only): €40 (for 2 people: €25 / person; for 3 people: €20 / person; for 4 or more people: €15 / person).

Fee per TH	1 learner	2 learners	3 learners	4 learners	5 learners	6 learners
2-3 trial lessons	€ 35	€ 38	€ 40	€ 45	€ 48	€ 50
From 4 TH	€ 32	€ 35	€ 37	€ 40	€ 43	€ 45

ECDL - European Computer Driving Licence

ECDL Standard: In addition to the four core modules (Computer Essentials, Online Essentials, Word Processing, Spreadsheets) three elective modules are chosen from the following: Presentations, Using Databases, Image Editing, Online Collaboration, IT Security, Project Planning, e-Health, Data Protection, Writing Standards, Accounting with DATEV.

Fee for the ECDL exam: €30 per module; Skills Card: €60 (passed modules are entered onto the card).



Heidelberg Kornmarkt and the Madonna fountain

Live language courses - worldwide, any time

You can find our wide range of German and English classroom courses on p. 18f. You can find our live online courses right here. With us you can learn languages at your leisure - worldwide, anytime, anywhere. Contact us at sprachen@fuu.de for further advice.

In our online training for groups and individual learners we use state-of-the-art technology to bring you German, English and Spanish courses around the world (other languages on request). In the virtual classroom our teachers support you in live, interactive lessons. You can arrange to start the course at any time, and we offer flexible course times to suit your needs. To participate in the lesson, you require a stable broadband Internet connection and a computer, laptop or tablet with camera and headset.

Intensive courses

Registration fee (for the first course only): €40 (for 2 people: €25 / person; for 3 people: €20 / person; for 4 or more people: €15 / person). **Family discount** (minimum one parent and one child): 10% off the course fees. **Course material**: € 50-70 per person

German as a foreign language

Starting dates: every Monday all year round for levels A1.2 to C1 (C2 on request). **For absolute beginners**: 06.07, 07.09, 02.11. **Lateral entry** is possible at any time.

Course no.	Course title	Course description, levels A1 - C2	TH / week	Learners	Course times (Mon-Fri)	Flexible course duration (fees per week)				
						1-4 wks	5-11 wks	12-24 wks	25-39 wks	From 40 wks
16	Main course	Homogenous learning groups, levels A1 to C2. From level C1: exam preparation ² or standard German options.	20	1-15	09:00-12:15	€ 150	€ 135	€ 115	€ 110	€ 105

¹The maximum number of learners may occasionally be exceeded in our examination preparation courses for DSH, TestDaF and telc C1 Hochschule.

English

Course start A2, B1, B2: 03.08, 02.11. **Course start A1, C1, C2**: 07.09, 07.12. **Lateral entry** is possible at any time.

Course no.	Course title	Course description, levels A1 - C2	TH / week	Learners	Course times (Mon-Fri)	Flexible course duration (fees per week)				
						1-4 wks	5-11 wks	12-24 wks	25-39 wks	From 40 wks
33	Main course	Teaching the various language skills in homogenous learning groups. Levels A1 to C2.	20	4-15	09:00-12:15	€ 185	€ 165	€ 150	€ 135	€ 125

Individual training

Registration fee (for first course): €10. **Course material**: €40 - €60 (eBook or print version) per level. The stated prices are per teaching hour (TH, 45 minutes).

German, English, Spanish	Standard language			Exam preparation			Specialist language training: business, care, medicine		
	2 TH	3-29 TH	From 30 TH	2 TH	3-29 TH	From 30 TH	2 TH	3-29 TH	From 30 TH
Individual lesson	€ 30	€ 28	€ 25	€ 34	€ 32	€ 29	€ 36	€ 34	€ 31

20% supplement for other languages: French, Chinese, Russian, Italian, Portuguese, Japanese, etc.

Course start: can be planned individually and at any time

Closed groups from 2 learners

Registration fee (for first course): €10. **Course material**: €40 - €60 (eBook or print version) per level. The stated prices are per teaching hour (TH, 45 minutes).

German, English, Spanish	Standard language			Exam preparation			Specialist language training: business, care, medicine		
	2 TH	3-29 TH	From 30 TH	2 TH	3-29 TH	From 30 TH	2 TH	3-29 TH	From 30 TH
2+ learners	€ 35	€ 33	€ 30	€ 40	€ 38	€ 35	€ 42	€ 40	€ 37

20% supplement for other languages: French, Chinese, Russian, Italian, Portuguese, Japanese, etc.

Course start: can be planned individually and at any time

Recommended course duration: The time required to complete a particular level (A1, A2, B1, B2, C1 and C2) depends on the number of course participants, the number of teaching hours per week and the level of contact with German outside the lesson. The following descriptions are based on learners accustomed to studying:

TH per level	1 learner	2 learners	3-5 learners	6+ learners
A1, A2, B1, B2, C1	80 TH	100 TH	120 TH	160 TH

C2 on request

Major discount promotions 2020

For bookings until 16.08.2020

Intensive and evening courses (online and classroom): 10% discount
Residences:

book six months and pay only four

For bookings until 31.12.2020

No registration fee for online courses.

One World Language Courses

Learn German with our online courses - no matter where you are.

This course is for early risers in Sao Paolo, Brazil or for morning people in Mexico City. It's also for those in Budapest or Tunis, who want to improve their German during the lunch break. This course also appeals to people in Tokyo, Beijing or in New Delhi, who want to improve their language skills after work.

Course start: **A1**: 02.06, 01.09, 01.12. **A2**: 07.07, 06.10. **B1**: 04.08, 02.11.

I. Main course	II. Culture + conversation	III. Module course	IV. Intensive course
4 teaching hours/week Standard German	2 teaching hours/week Culture + conversation	2 teaching hours/week Revision + consolidation	Main course Culture + Conversation + modul course
Tuesday + Thursday 12:00-13:30 pm	Wednesday 12:00-13:30 pm	Saturday 10:30-12:00	Tuesday + Wednesday + Thursday + Saturday
Levels: A1, A2, B1	Level: from A1	Level: from A1	Level: from A1
Course fee: 125€/month Teaching material: 50€/level	free	Course fee: 100€/month Teaching material: free	Course fee: 175€/month Teaching material: 50€/level

Evening courses

Registration fee (for the first course only): €40 (for 2 people: €25 / person; for 3 people: €20 / person; for 4 or more people: €15 / person). **Family discount** (minimum one parent and one child): 10% off the course fees. **Course material**: € 50-70 per person.



German as a foreign language

Course no.	Course title	Course description and levels	TH per month ¹	Learners	Course days 18:30-20:00	Fee per month		Entry
						1-5 mths	From 6 mths	
1	Main course	Teaching the various language skills in homogenous learning groups. Levels A1 to C1.	16	4-15	Monday + Thursday	€ 125	€ 95	Every Monday
2	Main course plus module course	Participation in a module course designed to supplement the main course and enhance skills.	24	4-15	Monday + Wednesday + Thursday	€ 175	€ 130	Every Monday
3 ^a	Module course I	Consolidation of language skills learned in the main course (grammar and conversation practice). Levels A1 to C1.	8	4-15	Wednesday	€ 100	€ 75	Every Wednesday
3 ^b	Module course II Revision and consolidation	Revision and consolidation of previously studied material. From level A1.	8	4-15	Saturday 10:30-12:00	€ 100	€ 75	Every Saturday
4	Intensive course	Participation in the competence-enhancing modules 1 and 2 in addition to the main course.	32	4-15	Monday + Wednesday + Thursday + Saturday	€ 225	€ 165	Every Monday

¹The stated prices are per teaching hour (TH, 45 minutes).

English

Course no.	Course title	Course description and levels	TH per month ¹	Learners	Course days 18:30-20:00	Fee per month		Entry
						1-5 mths	From 6 mths	
5	Main course	Teaching the various language skills in homogenous learning groups. Levels A1 to C1.	8	4-15	Monday	€ 100	€ 80	Every Monday
6	Main course plus module course	Participation in a module course designed to supplement the main course and enhance skills.	16	4-15	Monday + Thursday	€ 150	€ 120	Every Monday
7	Module course	Consolidation of language skills learned in the main course (grammar and conversation practice). Levels A1 to C1.	8	4-15	Thursday	€ 100	€ 80	Every Thursday

¹The stated prices are per teaching hour (TH, 45 minutes).



Educational leave in Heidelberg



The Old Bridge and the Church of the Holy Ghost

Educational leave in Heidelberg



Course start:

No. 9, 10: all year, every Monday.

Start for complete beginners: 13.01, 03.02, 02.03, 06.04, 04.05, 08.06, 06.07, 03.08, 07.09, 05.10, 02.11, 07.12

No. 11, 12: all year, every Monday; start for complete beginners on request.

No. 13, 14: 03.08 (other dates on request).

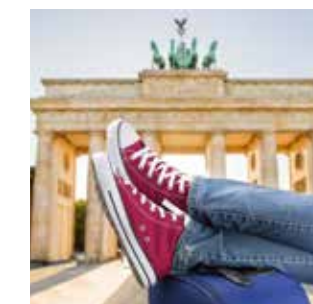
Course no.	Language	Course description and levels	TH / week	Learners	Course times (Mon-Fri)	1 week	2 weeks
★ 9	German as a foreign language	Teaching the various language skills in homogenous learning groups. Levels A1 to C2.	30	4-15	09:00-12:15 13:00-14:30	€ 255	€ 510
10	German as a foreign language	Combination of main course and mini group afternoons. Levels A1 to C2.	40	4-15/6	09:00-12:15 13:00-16:15	€ 550	€ 1100
★ 11	English	Teaching the various language skills in homogenous learning groups. Levels A2 to C1.	30	4-15	09:00-12:15 13:00-14:30	€ 255	€ 510
12	English		40	4-15	08:00-08:45 09:00-12:15 13:00-14:30 14:45-15:30	€ 295	€ 590
13	French, Italian, Spanish	Teaching the various language skills in homogenous learning groups. Levels A1 to B2.	30	4-6	09:45-15:30	€ 495	€ 990
14	French, Italian, Spanish	Combination of group and individual lessons (IL). Levels A1 to B2.	40 (incl. 10 IL)	4-6 + IL	08:00-15:30	€ 745	€ 1490

Courses are recognised by the Educational Leave laws in Baden-Württemberg, Bremen, Hessen and Rhineland-Palatinate; further accreditations on request.



★ Lessons on Tour

The F+U Academy of Languages offers the intensive German as a foreign language courses in Berlin and Heidelberg. At **no extra charge**, you can take your language course at both schools. All you need to do is inform us when you register which course you wish to take, at which school and for how long. The language courses are designed to enable a transfer at any time. If you decide to take our Lessons on Tour option **after you begin your course**, it is possible to transfer schools after a notice period of two weeks and with payment of a €100 fee (subject to availability of accommodation).



Major discount promotions 2020

For bookings until 16.08.2020

Intensive and evening courses (online and classroom): 10% discount Residences:

book six months and pay only four

For bookings until 31.12.2020

No registration fee for online courses.

Intensive courses - German in Heidelberg

- **Registration fee (for the first course only):** €40 (for 2 people: €25 / person; for 3 people: €20 / person; for 4 or more people: €15 / person)
- **Family discount** (minimum one parent and one child): 10% off the course fees
- **Please see page 9 for further important information.**



German as a foreign language

Course start:
No. 9, 10, 15-22: all year, every Monday.
Start for complete beginners: 13.01, 03.02, 02.03, 06.04, 04.05, 08.06, 06.07, 03.08, 07.09, 05.10, 02.11, 07.12
No. 23, 24, 26: 03.02, 02.03, 06.04, 04.05, 08.06, 06.07, 03.08, 07.09, 05.10, 02.11, 07.12. **No. 25, 27:** 03.08
No. 40: every Monday from 06.07 to 10.08; complete beginners: 06.07, 03.08; programme ends 14.08.; **No. 26a:** upon request

Course no.	Course title	Course description and levels	TH / week	Learners	Course times (Mon-Fri)	Flexible course duration (fees per week)				
						1-4 wks	5-11 wks	12-24 wks	25-39 wks	From 40 wks
15	Premium course¹	Homogenous learning groups, levels A1 to C2. From level C1: exam preparation² or standard German options.	30	4-15²	09:00-12:15 13:00-14:30	€ 195	€ 175	€ 145	€ 140	€ 135
16	Main course	See course 15	20	4-15²	09:00-12:15	€ 150	€ 135	€ 115	€ 110	€ 105
17	Main course + module course	Participation in module courses I or II, supplementary to main course.	20 + 10	4-15²	09:00-12:15 13:00-14:30	€ 195	€ 175	€ 145	€ 140	€ 135
18 a	Super-intensive course I: courses 15/17 + IL or 16 + 19/20 + IL	Combination of group and individual lessons (IL). Levels A1 to C2.	35 (incl. 5 IL)	4-15² + IL	08:00-08:45 09:00-12:15 13:00-14:30	€ 350	€ 320	€ 310	€ 305	€ 300
18 b	Super-intensive course II: courses 16 + 22	Combination of standard and mini-group. Levels A1 to C2.	40	4-15² / 6	09:00-12:15 13:00-16:15	€ 425	€ 420	€ 415	€ 410	€ 405
19	Module course I Grammar, conversation	Skills consolidation course, focus on grammar and conversation. Levels A1 to C2.	10	4-15	13:00-14:30	€ 110	€ 95	€ 85	€ 80	€ 75
20	Module course II Exam preparation	Preparation for DSH, TestDaF or telc C1 Hochschule. From level C1.	10	4-15²	13:00-14:30	€ 110	€ 95	€ 85	€ 80	€ 75
21	Intensive 20 - mini group, mornings	Intensive language course in small groups. Levels A2 to C2.	20	4-6	09:00-12:15	€ 300	€ 290	€ 285	€ 280	€ 275
22	Intensive 20 - mini group, afternoons	Intensive language course in small groups. Levels A2 to C2.	20	4-6	13:00-16:15	€ 300	€ 290	Maximum 11 weeks		
23	Medical German I or German for care professions	Main course + specialist language. From B1 level: medical German or German for care professions.	20 + 10	4-15	09:00-12:15 13:00-14:30	€ 295	€ 275			
24	Medical German II or German for care professions	From B1 level: medical German or German for care professions.	10	4-15	13:00-14:30	€ 150	€ 135			
25	Medical German III	Medical German. From level B1.	30	4-15	09:00-12:15 13:00-14:30	-	€ 325	Maximum 4 weeks		
26	Business German	Main course + specialist language: business German. From level A2.	20 + 10	4-15	09:00-12:15 13:00-14:30	€ 255				
26 a	Preparation for German Studienkolleg entrance exams	From level B1 German + Mathematics (further information on page 38)	20	10-20	13:00-16:15	€ 700	4 weeks			
9	Educational leave I	Language lessons regulated in accordance with the educational leave laws in Baden-Württemberg, Bremen, Hessen and Rhineland-Palatinate. Levels A1 to C1	30	4-15	09:00-12:15 13:00-14:30	€ 255	Maximum 2 weeks			
10	Educational leave II		40	4-15 / 6	09:00-12:15 13:00-16:15	€ 550				
27	Professional development seminar for German teachers		Continuing professional development seminar for German teachers. Minimum level C1	20 + 20	4-6	13:00-16:15 (+ job shadowing from 09:00-12:15)				
40	Junior programme	See page 18 for a detailed description.	20	4-12	09:00-12:15	€ 210	€ 195	Maximum 6 weeks		

¹The morning and afternoon classes follow a set curriculum and unlike course no. 17 do not run as a main course and module course with focus on different themes. Therefore the pace of learning is faster.
²The maximum number of learners may occasionally be exceeded in our examination preparation courses for DSH, TestDaF and telc C1 Hochschule.

Intensive courses - German plus English in Heidelberg



German as a foreign language plus English

Course start:
No. 28-30: all year, every Monday.
Start for complete beginners: 13.01, 03.02, 02.03, 06.04, 04.05, 08.06, 06.07, 03.08, 07.09, 05.10, 02.11, 07.12

Course no.	Course title	Course description, levels A1 - C2	TH / week	Learners	Course times (Mon-Fri)	Flexible course duration (fees per week)				
						1-4 wks	5-11 wks	12-24 wks	25-39 wks	From 40 wks
28	German (main course) plus English (module course)	Learn both German and English in intensive courses; opportunity to gain internationally recognised language certificates (TestDaF, telc, TOEFL®).	20 + 10	4-15	09:00-12:15 13:00-14:30	€ 210	€ 205	€ 200	€ 195	€ 190
29	English (main course) plus German (intensive, afternoons)¹		20 + 20	4-15	09:00-12:15 13:00-16:15	€ 250	€ 245	€ 240	€ 235	€ 230
30	English (main course) plus German (module course)		20 + 10	4-15	09:00-12:15 13:00-14:30	€ 200	€ 195	€ 190	€ 185	€ 180

¹This course is ideal for students who wish to learn English but require a German intensive course for their visa. All our English teachers are qualified, trained native speakers with many years' experience. Learn English in the international city of Heidelberg! In 2018 learners from 35 countries participated in our English courses.

Learners' home countries: German courses

(approx. 6,195 learners)

Country	Share	Country	Share	Country	Share
People's Republic of China	15.20%	Israel	4.42%	Iran	1.07%
Japan	9.94%	South Korea	4.39%	Spain	1.00%
Turkey	9.16%	USA	2.16%	Ukraine	0.98%
Mexico	8.16%	India	1.36%	Syria	0.97%
Tunisia	7.90%	Mauritius	1.34%	Cyprus	0.80%
Italy	7.80%	Switzerland	1.33%	France	0.70%
Russian Federation	6.94%	Brazil	1.16%	*95 more countries	13.24%
Total: 100.00%					

***95 other countries:** Afghanistan, Albania, Algeria, Angola, Argentina, Armenia, Australia, Azerbaijan, Bahrain, Bangladesh, Belarus, Belgium, Bolivia, Bosnia and Herzegovina, Bulgaria, Cambodia, Cameroon, Canada, Chile, Colombia, Croatia, Cuba, Czech Republic, Denmark, Dominican Republic, Ecuador, Egypt, Eritrea, Ethiopia, Georgia, Germany, Greece, Guatemala, Guinea, Hungary, Indonesia, Iraq, Ireland, Ivory Coast, Jamaica, Jordan, Kazakhstan, Kenya, Republic of Kosovo, Kuwait, Kyrgyzstan, Latvia, Lebanon, Libya, Lithuania, Luxembourg, Macedonia, Malaysia, Moldova, Mongolia, Montenegro, Morocco, Mozambique, Myanmar, Netherlands, New Zealand, Nicaragua, Nigeria, Norway, Pakistan, State of Palestine, Paraguay, Peru, Philippines, Poland, Portugal, Qatar, Romania, Saudi Arabia, Serbia, Slovakia, Somalia, South Africa, Sri Lanka, Sudan, Sweden, Taiwan, Tanzania, Thailand, Togo, Trinidad and Tobago, Turkmenistan, United Arab Emirates, United Kingdom, Uruguay, Uzbekistan, Venezuela, Vietnam, Yemen.

Major discount promotions 2020

For bookings until 16.08.2020
Intensive and evening courses (online and classroom):
10% discount
Residences:
book six months and pay only four

For bookings until 31.12.2020
No registration fee for online courses.



Intensive courses - English in Heidelberg

English

Course start A2, B1, B2: all year, every Monday. Course start A1, C1, C2: 03.08, 02.11. Lateral entry: any time.
Course start no. 41: 03.08, 10.08. For absolute beginners: 03.08. Programme ends: 14.08.

Course no.	Course title	Course description, levels A1 - C2	TH / week	Learners	Course times (Mon-Fri)	Flexible course duration (fees per week)				
						1-4 wks	5-11 wks	12-24 wks	25-39 wks	From 40 wks
31	Consolidation course I	Grammar and conversation practice. Levels A1+A2/ B1+B2/C1+C2	5	4-15	08:00-08:45	€ 50	€ 45	€ 40	€ 40	€ 40
32	Consolidation course II	Grammar and conversation practice. Levels A1+A2 / B1+B2 / C1+C2	5	4-15	14:45-15:30	€ 50	€ 45	€ 40	€ 40	€ 40
33	Main course	Teaching the various language skills in homogenous learning groups. Levels A1 to C2.	20	4-15	09:00-12:15	€ 185	€ 165	€ 150	€ 135	€ 125
★ 34	Main course plus consolidation course I	The course offers more intensive progression. Levels A1 to C2.	20+5	4-15	08:00-08:45 09:00-12:15	€ 195	€ 175	€ 160	€ 155	€ 150
35	Main course + module course I-III	Participation in module courses I - III to supplement the main course. Levels A1 to C2	20+10	4-15	09:00-12:15 13:00-14:30	€ 205	€ 195	€ 175	€ 170	€ 165
★ 36	Super-intensive course	Consolidation I, II + main course + module course. Levels A1 to C2.	40	4-15	08:00-08:45 09:00-12:15 13:00-14:30 14:45-15:30	€ 245	€ 220	€ 210	€ 205	€ 200
37	Module course I Conversation training	Skills consolidation lesson: focus on conversation. Levels A1 to C2.	10	4-15	13:00-14:30	€ 100	€ 95	€ 90	€ 85	€ 80
38	Module course II Business English	Skills consolidation lesson: focus on conversation. Levels A1 to C2.	10	4-15	13:00-14:30	€ 100	€ 95	€ 90	€ 85	€ 80
39	Module course III Exam preparation	Preparation for various exams: TOEFL®, IELTS, telc, TOEIC®. From level B1.	10	4-15	13:00-14:30	€ 150	€ 140	€ 135	€ 130	€ 125
★ 11	Educational leave I	Language lessons regulated in accordance with the educational leave laws in Baden-Württemberg, Bremen, Hessen and Rhineland-Palatinate. Levels A2 to C1	30	4-15	09:00-12:15 13:00-14:30	€ 255	Maximum 2 weeks			
12	Educational leave II		40	4-15	08:00-08:45 09:00-12:15 13:00-14:30 14:45-15:30	€ 295				
★ 41	Junior programme		20	4-15	09:00-12:15	€ 210				

Learners' home countries: English courses

(approx. 825 learners)

Country	Share	Country	Share	Country	Share
Germany	35.25%	Italy	3.10%	Colombia	0.80%
Japan	15.75%	Saudi Arabia	2.13%	Chile	0.80%
Russian Federation	9.35%	Portugal	1.77%	Croatia	0.71%
People's Republic of China	6.05%	Israel	1.68%	Kazakhstan	0.62%
Georgia	5.16%	France	1.06%	Republic of Kosovo	0.53%
Ukraine	3.28%	Brazil	0.89%	Poland	0.53%
Turkey	3.20%	Azerbaijan	0.89%	*15 other countries	6.47%
Total: 100.00%					

*15 other countries: Algeria, Armenia, Dominican Republic, Hungary, Iran, Kuwait, Montenegro, Paraguay, Peru, Serbia, South Korea, Spain, Switzerland, Syria, Taiwan

Major discount promotions 2020

For bookings until 16.08.2020
Intensive and evening courses (online and classroom): 10% discount
Residences:
book six months and pay only four
For bookings until 31.12.2020
No registration fee for online courses.



Heidelberg Old Bridge: Brückentor (bridge gate)

Junior programme in summer

German and English summer courses (9-15 years*)

Summer holiday language courses for children and young people (9-15* years) in one of Germany's most beautiful cities!

Overview

- **German or English courses** for small groups of children and young people from all over the world (max. 12 learners).
- **Registration fee (for the first course only):** €40 (for 2 people: €25 / person; for 3 people: €20 / person; for 4 or more people: €15 / person)
- **Parent-child junior programme:** 10% off the course fee. Children take part in the junior programme and parents participate in an intensive course of at least 10 teaching hours per week. Accommodation in halls of residence or with host families.
- **Discounts on course fees and additional modules** are available for joint registrations: two young learners: 5%; three young learners: 10%; four or more junior learners: 15%. **Discounts cannot be accumulated.**

*Young people aged 16 or above can also participate in an adult course.

Language course

Course no.	Language	Age group	Course levels	TH	Learners	Course times (Mon-Fri)	Fee per week (incl. course material)		Start ¹	End
							1-4 wks	5-6 wks		
★ 40	German	9-12, 13-15 years	A1; A2/B1; B2/C1	20	4-12	09:00-12:15	€ 210	€ 195	Every Monday 06.07 - 10.08 ¹	14.08
★ 41	English		A2/B1; B2/C1	20	4-12	09:00-12:15	€ 210	-	03.08 or 10.08 ¹	

¹Start for complete beginners: 06.07 and 03.08 (German); English on request.

Accommodation

Host Family

Teenagers over 14 years of age are placed with one of our carefully selected host families.

Meals	Duration	Fee
Full board	1-4 weeks	€ 380
	5-6 weeks	€ 365

Halls of residence

Young people over 16 years of age can move into one of our halls of residence. Please refer to the information on page 34ff.

Discount promotion: Rent a room for 25 weeks and pay only 17 weeks. Save up to 2080€.

Ask today for information about our 2020 discount campaigns: languages@fuu.de

Requirements:

- The rooms can only be rented in **combination with a language course** of at least 20 lessons per week.
- **Rental period:** at least 25 weeks, maximum rental period 40 weeks.
- For 25 weeks rental you only pay 17 weeks in advance.
- Cancellation is not possible during the first 25 weeks of the rental period. After that a cancellation period of 4 weeks applies. As usual there is a cancellation fee of 75€. We also charge an additional administration fee of 80€.
- **Latest possible start** of the rental period is 18 October 2020.

Transfer to the accommodation

For unaccompanied children and teenagers up to 16 years of age, we need all the details of your child's arrival at least two weeks before moving in, so that we can pick them up from the airport without any problems.

Price per person	Heidelberg central railway station ¹		Mannheim central railway station ¹		Frankfurt am Main airport ²		Stuttgart / Baden-Baden - Karlsruhe airport ²		Hahn / Strasbourg / Saarbrücken airport ²	
Distance ³	2 km		20 km		80 km		120 km / 95 km		160 km / 140 km / 160 km	
Route	One way	Both ways	One way	Both ways	One way	Both ways	One way	Both ways	One way	Both ways
1 person	€ 50	€ 90	€ 95	€ 170	€ 120*	€ 235**	€ 175	€ 310	€ 195	€ 345
2 people ⁴	€ 40	€ 75	€ 80	€ 140	€ 70	€ 135	€ 125	€ 220	€ 135	€ 240
3 people ⁴	€ 35	€ 65	€ 70	€ 125	€ 60	€ 120	€ 80	€ 140	€ 95	€ 170
4 people ⁴	€ 30	€ 55	€ 65	€ 115	€ 50	€ 100	€ 70	€ 125	€ 80	€ 140

¹Meeting point at taxi rank.

²Meet at the 'meeting-point' in the arrivals hall or at the designated place.

³Distance to school.

⁴Discount only for group registrations with joint arrivals and departures.

*The increase became necessary because the transfer companies had to raise prices due to the reduction in the minimum number of participants.

**Discounts for more than one person can only be granted if you arrive at the same time.



Junior programme in winter

German courses in winter for young learners (12-17 years)

Language courses in winter for children and young people (12-17 years) in one of Germany's most beautiful cities!

- **German courses** for small groups of young people from all over the world (max. 12 learners)
 - **Accommodation** with carefully selected host families or in hall of residence (only for accompanied groups)
 - **Meals, varied leisure programme, transfer**
- All modules can be booked individually or as a package.

Registration fee (for the first course only): €40 (for 2 people: €25 / person; for 3 people: €20 / person; for 4 or more people: €15 / person).

Parent-child junior programme: 10% off the course fee.

Discounts on course fees and additional modules are available for joint registrations: two young learners: 5%; three young learners: 10%; four or more young learners: 15%.

Discounts cannot be accumulated.



Language course

Course no.	Language	Age group	Course levels ¹	TH	Learners	Course times (Mon-Fri)	Fee (incl. course material)	Start	Duration ³
51	German	12 and 13; 14-17 years ²	A2; B1; B2	20	4-12	09:00-12:15	€ 210	14.12.2020 and 11.01.2021	1 week

¹Level C1 on request.

²Young people aged 16 or above can also participate in adult courses.

³The course may be extended on request.

Modules

Course no.	Accommodation, lunch, leisure activities: module description	Weekdays	Time	Fee
52	Host family accommodation (half board ¹)	Sunday - Saturday	-	€ 280
53	Hall of residence - double room (only for groups accompanied by a teacher)	Sunday - Saturday	-	€ 135
54	Lunch in the school	Monday - Friday	12:30-13:30	€ 95
55	Leisure activities ²	Monday - Friday	13:30-17:00	€ 120

¹Modules 54 and 55 are obligatory for host family accommodation bookings, as host family supervision of children and young people is usually available from 17.30 on working days. Supplement for an English-speaking family: €100 per week.

²Our leisure programme (no. 55) is an exciting mix of sports and cultural activities, for example: Discovery tour of Heidelberg, visits to Heidelberg castle and the Heidelberg Christmas market, ice-skating, climbing, skiing/snowboarding, trips to the trampoline park, cinema, group baking and handicrafts. For older learners we also organise university visits.

Includes: Accompaniment, admission tickets and transport costs associated with the activity. **Not included:** Meals during trips and activities.

Packages and additional modules

Course no.	Packages		Fee	
56	No. 51 and 52 + 54 + 55 (language course + host family accommodation + lunch + activities¹)		€ 680	
57	No. 51 and 53 + 54 + 55 (language + hall of residence accommodation + lunch + activities¹)		€ 530	
58	No. 51 and 54 + 55 (language course + lunch + activities¹)		€ 395	
	Additional module: accompaniment	Days	Fee	
59	Accompaniment to school and back to host family	Monday - Friday	€ 195	
	Additional module: transfer		One way	Both ways
60	Group transfer from Frankfurt am Main airport², ³		€ 95	€ 170
61	Individual collection from Frankfurt am Main, Karlsruhe / Baden-Baden or Stuttgart airport³		€ 195	€ 370

¹Service includes: supervision, admission tickets and transport costs associated with the activity.

²Collection from Meeting Point.

³We will be pleased to provide a quote for a transfer from a different airport or from a railway station.

Junior programme throughout the year

English holiday courses (6-15 years)

- **Registration fee** (for the first course only): €40 (for 2 people: €25 / person; for 3 people: €20 / person; for 4 or more people: €15 / person).
- **Parent-child junior programme:** 10% off the course fee. (Young learners take part in the junior programme and parents participate in an intensive course of at least 10 teaching hours per week. Accommodation in hall of residence or with host families)
- **Discounts** on course fees and additional modules are available for joint registrations: two young learners: 5%; three young learners: 10%; four or more young learners: 15%. **Discounts cannot be accumulated.**

Course no.	Language	Age group	Course levels ¹	TH	Learners	Course times (Mon - Fri)	Fee (incl. course material)	Start	Duration ³
62	English	6-8 years; 9-12 years; 13-15 years ²	A2, B1, B2	20	4-12	09:00-12:15 ³	€ 210	24.02; 14.04 ³ ; 08.06 ³ ; 03.08; 10.08; 26.10	1 week

¹Levels A1 and C1 on request.

²Young people aged 16 or above can also participate in adult courses.

³Due to the Easter and Whitsun public holidays the courses are held across four days (09:00-13.15).

German and English courses all year (3-10 years)

- **Age-appropriate language courses** (German or English)
- Our children's academy courses are taught by qualified native speaker teachers.
- Lessons for **pre-school children** also include movement games. The alternation between play and structured learning helps prepare children for when they start primary school.
- **Course structure:** Grammar lessons, conversation training, introduction to the Latin alphabet, creative development, preparation for primary school
- **Course start:** Every Friday (no lessons on public holidays or in August).
- **Minimum number of learners:** 4 children
- **Sibling discount:** 2 children: 5%; from 3 children: 10%.

Course no.	Language	Age group	TH	Learners	Course times	Fee per month ¹	Start
63	German or English	3-4; 4-5; 6-7; 8-10 years	2	From 4 children	17:00-18:30	€ 60	Fridays

¹For prepayment of 6 months: €300.

Russian academy for children (1-14 years)

In addition to supporting general development, our Russian academy also teaches children about the Russian language and culture. The focus of the lesson is age-appropriate teaching and consolidation of Russian language skills, musical education and the development of logical-mathematical thinking and creativity. The alternation between play and structured learning helps prepare pre-school children for when they start primary school.

Course start: Every Saturday (no lessons on public holidays or in August).

Minimum number of learners: 4 children

Sibling discount: 2 children: 5%; from 3 children: 10%.

Course no.	Age group	Course times	Fee per month ¹
64	1-2 years (Mother-child course)	By arrangement	€ 50
	2-3 years (Mother-child course)	09:30-10:30	
	3-4 years	10:15-12:45	€ 60
	4-5 years	09:30-12:30	
	5-6 years	10:00-13:00	
	6-7 years	10:00-13:00	



¹Plus cost of course materials.

Course no.	Course type	Age group	Course times	Fee per month ¹
65	Russian	8-12 years	11:30 -13:00	€ 35
		13+ years	09:30-11:00	
66	English	8-12 years	13:00-14:30	€ 35
		13+ years	11:00-12:30	
67	Art		10:00-11:30	€ 40
68	Geography		Morning/afternoon	€ 35
69	Logic		Morning/afternoon	
70	Music		120 minutes per month; individual lesson by arrangement	€ 75
71	German as a foreign language for parents		10:00-11:30	€ 35



¹Plus cost of course materials.

Group packages (for young and adult learners)

German and English courses

Throughout the year we offer packages for class trips and groups of seven or more people. The packages are designed for learners wishing to improve their foreign language skills together while experiencing German culture in one of the country's most beautiful cities. Our diverse cultural programme offers plenty of variety, and can be tailored in advance to meet the special interests of the group participants. To round off the perfect language trip, accommodation (with or without meals) can be booked in our halls of residence or with host families, as well as a range of transfer options.

Free offers for group leaders:

- **Language course:** German or English (from seven participants).
- **Accommodation:** a room in one of our halls of residence (from ten participants; host family and hotel accommodation is only available at list price).

General information:

- **Administration fee per group:** €100.
- **Includes:** Placement tests, progress tests, certificate of participation, use of the school library, reading room and computer workstations, Wi-Fi.

Course material (copies): €10 per learner. For those who prefer to work with books, the course material can be purchased separately from the school: two course books cost between €35 and €60, depending on the level and language. Placement in international groups is guaranteed for German (A1-C2) and English (A2-C2).

Language(s)	TH / wk	Course times (Mon-Fri)	Fee per week and per person
German	20	09:00-12:15	€ 140
German	30	09:00-12:15 and 13:00-14:30	€ 175
English	20	09:00-12:15	€ 150
English	30	09:00 12:15 and 13:00-14:30	€ 185
German and English	20 + 10	09:00-12:15 (G) / 13:00-14:30 (E)	€ 195

Accommodation and meals

Accommodation type (twin room occupancy) ¹	Shower/WC	Kitchen	Meals	Fee per week and per person
Residence cat I or II	On corridor	On corridor	See note ²	€ 85
Residence cat V	In room	In room		€ 175
Host family	Shared with the family		Half board	€ 235
Hotel (single room supplement: 60 %)	In room	No	See note ²	€ 525
Youth hostel (dormitory, from 4 people)	In room	No	Half board	€ 295

¹**Single rooms** can be booked for a supplement. We will be happy to provide a quotation!

²**Meals** in restaurants close to the school: half board: €140; full board: €245 (per week and per person; includes a soft drink or cup of tea or coffee with each meal). In July and August lunch is also available in the school canteen: €85 / week (other dates on request). On excursions groups are responsible for organising their own meals.



Group packages, transfer, cultural programme

Transfer to / from accommodation

The price of a weekly ticket (bus and tram) for Heidelberg city area is €30; for Heidelberg and the surrounding area €50. Further offers for groups of 41 or more people and for transfers from other airports are available on request.



Route (transfer to/from accommodation)		Fee per person	
		7-15	From 16
Heidelberg central railway station	One way	€ 25	€ 18
	Both ways	€ 45	€ 38
Mannheim central railway station	One way	€ 45	€ 25
	Both ways	€ 85	€ 45
Frankfurt am Main airport	One way	€ 55	€ 40
	Both ways	€ 100	€ 70
Frankfurt Hahn / Karlsruhe / Stuttgart airport	One way	€ 70	€ 55
	Both ways	€ 130	€ 90



We pay close attention to your safety and also keep to the minimum distance rule in our transfer offer. For this reason we have been forced to update the prices. We are also happy to help you find a suitable train connection for no additional cost. Feel free to contact us: languages@fuu.de



Cultural programme

Activity	Duration	Fee per person / activity
Orientation tour of Heidelberg's Old Town	Ca. 2 hours	Free (except for food and drinks)
Walks (Heiligenberg, Philosophers' Walk, Heidelberg Castle gardens and more)	Ca. 3 hours	
Sports activities (by the Neckar or in the school's own sports hall)	Ca. 3 hours	
Regular F+U 'Stammtisch' get-together	Ca. 2 hours	
Japanese seminar (food and drink included but not for Japanese social event that follows)	Ca. 2 hours	€ 5
Barbecue party by the Neckar (food and drinks included)	Ca. 2 hours	€ 15
Welcome party (food and drink included)	Ca. 2 hours	€ 20
Museum visits (German Apothecary Museum, Palatinate Museum of Heidelberg)	Ca. 2 hours	€ 15
Museum visits (Technoseum, Kunsthalle Mannheim gallery, planetarium and more in Mannheim)	Ca. 4 hours	€ 25
Boat trip on the Neckar: within Heidelberg	Ca. 1 hour	€ 18
Excursions (half day) ¹	Ca. 5 hours	€ 40
Excursions (all day) A ²	Ca. 8 hours	€ 65
Excursions (all day) B ³	Ca. 8 hours	€ 75

¹German Wine Route in nearby Palatinate, Speyer (cathedral), Mannheim (Luisenpark), Bad Wimpfen (medieval town centre), Schwetzingen Palace, boat trip to Neckarsteinach (town with four forts), Ladenburg (incl. admission).

²Frankfurt am Main, Rudesheim am Rhein, Stuttgart (Mercedes Benz or Porsche Museum; incl. admission), Black Forest (e.g. Triberg waterfalls, Cuckoo-Clock-Museum).

³Strasbourg, Europa-Park Rust (incl. admission), Rothenburg ob der Tauber, Nuremberg, Baden-Baden (incl. admission to Caracalla Spa), Lake Constance.

Additional services, special courses, cultural programme

★ Free offers for Academy of Language students

Homework support (Monday to Friday 15.00 - 17.00), literature seminar (Thursdays), theatre and cinema working group (Wednesdays), TestDaF preparation (speaking, listening comprehension - Saturdays), orientation tour of Heidelberg's Old Town (Mondays), hikes (Heiligenberg, Philosophers' Walk, Heidelberg castle gardens and more - Tuesdays), our popular Japanese seminar¹ (monthly - food and drink: €5 per person), exam advice (focus on telc C1 Hochschule, DSH and TestDaF), open office hours in various languages (the administration team is multilingual - whether you speak Chinese, Japanese, Russian, English, Spanish, Italian or another language, you'll always find the ideal contact person).

¹The Japanese seminar also welcomes external enthusiasts of the Japanese culture and language.

University advice

We offer a university advice service for our learners at the school who after their language course aim to begin a degree course at a German university. The service includes checking documentation, orientation and help in the selection of suitable universities/subjects, assistance with up to three university applications, and the correction of letters of motivation and the CV.

Requirement: Higher education admission qualification in the learner's home country. **Fee:** €300.

Provisional admission

We offer university application support for learners who have booked an intensive course of at least 12 weeks at our school and require provisional university admission for their visa application. We check the application documents and assist with the preparation of application documents for up to two universities, correction of the letters of motivation/CV and communication with the universities. The processing time for the individual universities can take up to ten weeks; this should be taken into account in the application process.

Admission requirement: Evidence of the higher education admission qualification in the learner's home country.

Fee: €550 (including processing fees charged by the respective university.)

(A successful application cannot be guaranteed. If the application is rejected by the university €200 of the administration fee will be refunded. The university's processing fee is non-refundable.)

Support with official administration

We offer customers requiring a visa the following services after arrival: support in almost all official administration matters, convenient registration or re-registration at the town hall, advice and appointment scheduling for opening or activating a bank account, help with organising German health insurance, checking documents for the immigration authorities and general information on extending visas.

Requirement: Language course booking of at least 12 weeks.

Fee: €275 (individual services, such as registration at the town hall, can also be booked separately for €85.)

À la carte courses

Parallel to our intensive courses, we organise various special courses in cooperation with local sports clubs, operators and music schools.

Selected courses: Football, handball, table tennis, tennis, basketball, field hockey, ice hockey, rugby and other sports, as well as music lessons and floristry. Please note that the practice sessions are invoiced separately. The fee depends on the number of hours booked and, in particular, on the type of activity. For sports lessons all that is normally required is a small fee, payable to the sports club.

Placement fee: €325 (successful placement cannot be guaranteed; if no placement is found, €225 will be refunded).

Piano practice

Practice session at the school's own piano (Steinway & Sons): €10 per 60 minutes.

Language course and internship

Applications for the internship (maximum duration three months, unless offered as training module in conjunction with a study programme) should be made at least eight weeks before the preferred starting date.

Requirements: Participation in an intensive course of at least two weeks and knowledge of German (level B1; for an internship at the F+U Academy of Languages level A1 is acceptable). Applicants from third countries must provide a work visa for the internship (e.g. a Working Holiday visa). All applicants must also provide evidence that the internship supports career orientation (orientation internship) or is to be carried out as an accompaniment to training or studies. Supporting evidence may include, for example, a training contract, course enrolment form or school letter of authorisation.

Placement fee: €350. Successful placement cannot be guaranteed. If placement is not possible, 50% of the fee will be refunded; alternatively, the internship can be completed at F+U.

Language learning and cultural training

The programme is designed for young people keen to take an active role in our cultural programme, alongside their German course.

We strongly recommend participation in the programmes offered by our Japanese Centre and Chinese Centre. **Administration fee:** €225

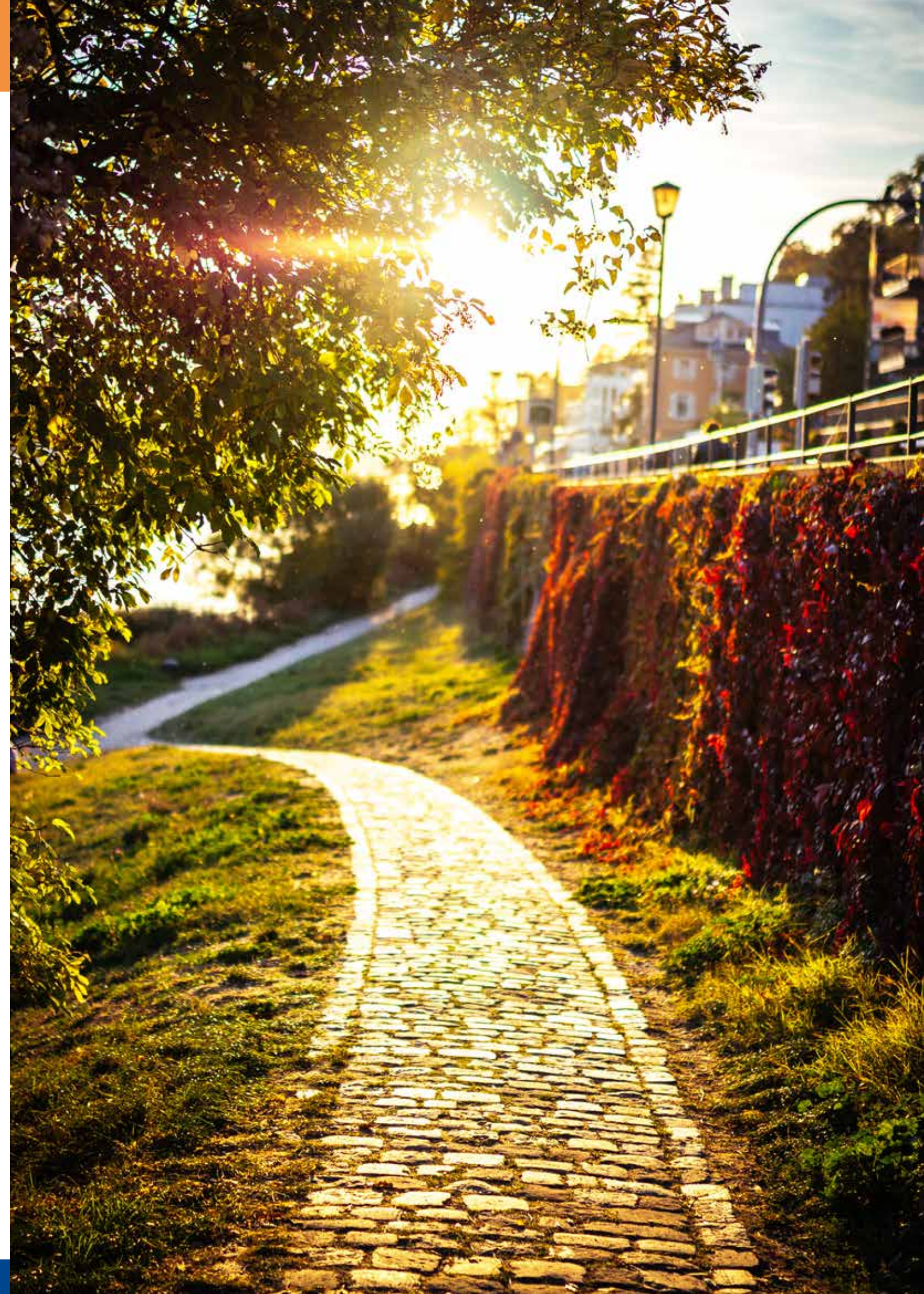
Cultural programme

Groups are accompanied by a member of school staff; unless otherwise indicated the fee includes only travel and personnel costs. The minimum number of participants for the events is 10.

School classes participate in our general programme; separate activities are only organised for an additional fee. Details are available on request. See page 27 for additional information.

Childminder service

Parallel childminding service for parents participating in an intensive course: €20 per 45 minutes (two children: €15 per child; three children: €13 per child).



Location of Halls of Residence and Apartments



Host family accommodation

Administration fee: €80. **Deposit:** €150 (for deposit refunds please contact us by Wednesday, 16.00). **Supplement of 40% for each of the following:** **Wi-Fi guarantee; English-speaking host family; full board** (breakfast and evening meal with the family; packed lunch). **Use of host family's kitchen** for room only bookings: 20% supplement. You will be advised of the **name and address of the host family** two weeks before moving in, and upon full payment. **Host family accommodation:** Laundry once or twice a week. The **rental contract** can be cancelled with a notice period of four weeks. **Move in:** Sundays, 11.00-18.00, **move out:** Saturdays 10.00-18.00 (moving in outside these times is subject to a supplement of €35 and must be agreed in advance). In case of delay, please contact your host family.

Category	Distance to school	Meals	Rent per week / room						Extra day ² rent per day/room	
			1-4 weeks		5 - 11 weeks		From 12 weeks			
			SGL	DBL	SGL	DBL	SGL	DBL	SGL	DBL
HF-A	2 - 30 minutes by public transport ¹	Half board	€ 265	€ 500	€ 215	€ 405	€ 205	€ 385	€ 50	€ 95
		Breakfast	€ 215	€ 405	€ 190	€ 360	€ 180	€ 340	€ 45	€ 80
		Room only	€ 185	€ 350	€ 170	€ 320	€ 160	€ 300	€ 40	€ 70
HF-B	Maximum 50 minutes by public transport ¹	Half board	€ 205	€ 385	€ 190	€ 360	€ 180	€ 340	€ 45	€ 80
		Breakfast	€ 175	€ 330	€ 160	€ 300	€ 150	€ 285	€ 40	€ 70
		Room only	€ 155	€ 290	€ 145	€ 275	€ 135	€ 255	€ 35	€ 60

¹Journey time to school (by public transport): The distance to the bus/tram stop is not included; this is usually just a 5-10-minute walk from the accommodation. Further details are available on request.

²An extra day is invoiced for arrival between 15.00 and 20.00 on Saturday at the host family accommodation, or for late departure on Sunday by 12.00 at the latest (all extra days must be confirmed in advance by F+U).

Transfer to accommodation

Transfer to accommodation (to be booked by Thursday, 14.00, before the arrival or departure).

Price per person	Heidelberg central railway station ¹		Mannheim central railway station ¹		Frankfurt am Main airport ²		Stuttgart / Baden-Baden - Karlsruhe airport ²		Hahn / Strasbourg / Saarbrücken airport ²	
Distance ³	2 km		20 km		80 km		120 km / 95 km		160 km / 140 km / 160 km	
Route	One way	Both ways	One way	Both ways	One way	Both ways	One way	Both ways	One way	Both ways
1 person	€ 50	€ 90	€ 95	€ 170	€ 120*	€ 235**	€ 175	€ 310	€ 195	€ 345
2 people ⁴	€ 40	€ 75	€ 80	€ 140	€ 70	€ 135	€ 125	€ 220	€ 135	€ 240
3 people ⁴	€ 35	€ 65	€ 70	€ 125	€ 60	€ 120	€ 80	€ 140	€ 95	€ 170
4 people ⁴	€ 30	€ 55	€ 65	€ 115	€ 50	€ 100	€ 70	€ 125	€ 80	€ 140

¹Meeting point at taxi rank.

²Meet at the 'meeting-point' in the arrivals hall or at the designated place.

³Distance to school.

⁴Discount only for group registrations with joint arrivals and departures.

Weekend transfers can be cancelled without charge until 15.00 (German local time) on the Friday before the arrival or departure. Weekday transfers can be cancelled until 15.00 (German local time) one day before the scheduled transfer. If the cut-off day falls on a public holiday, the notice period is extended accordingly. Later cancellations cannot be accepted and the cost of the transfer will be invoiced in full.

Our airport transfer from and to Frankfurt am Main is organised on a group basis through a partner company. Individual collection (e.g. for under 18s) by a named F+U accompanying member of staff can be arranged for a supplementary charge of €100 per journey.

*The increase became necessary because the transfer companies had to raise prices due to the reduction in the minimum number of participants.

**Discounts for more than one person can only be granted if you arrive at the same time.

Parking

Parking is available in the unsupervised car park at the Concordia hall of residence for €25 per week. There is public, paid parking available in the school building (ca. €150 per month).

Guest houses, holiday homes, hotels, youth hostel

Referral fee: €175.

Guest houses, holiday homes: Prices on request; weekly rates depends on size, location in the city, furnishings and season; rates from €300 to €1500.

The F+U Bayrischer Hof Hotel*:** The Bayrischer Hof, one of the most tradition-steeped hotels in the city, is located on Bismarckplatz, just 150m from the school and the Old Town (single rooms from €100 per night; double rooms from €130 per night).

Hotels in all price categories are located close to the school. We can also book rooms in Heidelberg's attractively located **youth hostel**.

Meals

All halls of residence and apartments are equipped with a kitchen. Host families provide meals as specified in the booking. **Meals in partner restaurants (Sun-Sat):** Lunch*: €110 per week; evening meal*: €125 per week (*incl. 1 soft drink). **Lunch in our school canteen** (July and August only): €95 per week (Mon-Fri). You can also have a meal for about €6 in the **University of Heidelberg refectory (Mensa)**, just ten minutes' walk from the school.



F+U Hotel Bayrischer Hof

24-hour telephone service

You can reach us round the clock, seven days a week on +49 6221 9120-38.



Arrival and departure

- Move in:** Sundays, 10.00-22.00. Moving in after 22.00 (24.00 at the latest) is only possible with prior agreement and payment of a €50 supplement. Moving in on Saturday (13.00-18.00) is only possible with prior agreement and payment of an extra day's rent (see page 34).
- Please inform us no later than Friday (14.00) before moving in of the exact time of your arrival. If you inform us any later, we will not be able to guarantee the handover of the key at your preferred time.
- In case of delay, please call our weekend team on +49 162 29333-26.
- Move out:** Saturdays, by 12.00. Moving out on Sunday (by 10.00 at the latest) is only possible with prior agreement and payment of an extra day's rent (see page 34).

Halls of residence have a 'student' character

Accommodation rates for halls of residence and apartments are calculated to take into account both location (distance to school, attractiveness of the district) and the furnishings/facilities of the accommodation. However, please bear in mind that all our halls of residence and apartments have a 'student' character, including those in higher categories.

Internet, PC use, fitness room

- Most halls of residence and the apartments are equipped with Internet access. We provide Internet access free of charge. Please note that it is not a high-speed Internet connection. Now and then demand for accommodation exceeds our supply of 500 rooms, in which case we rent additional rooms and apartments. Information on their Internet facilities is available on request. Compliance with German Internet law is required at all times. There may be temporary disruption to Internet provision.
- You can also use the computers in our school, with free Internet access (50 computers in three IT rooms); Wi-Fi is also available from 07.30 to 20.00 Mondays to Fridays and on Saturdays from 10.00 to 16.00.
- If you lock yourself out of your room we can provide a spare key on payment of a deposit. Please note that this service is only available during the following office hours: Monday to Friday: 8.30 to 19.00; Saturday: 10.30 to 15.30. Outside these times you will need to call a professional locksmith at your own cost; fees are between €70 and €150, depending on the service provider.
- A laundry, a lounge and a small fitness room are available for residents of the F+U Campus halls of residence.

Cleaning the room and communal areas

Please note that for the entire duration of your stay you are responsible for cleaning your room. When you vacate the room, the accommodation must be clean and tidy. Furnishings that do not belong to the room and/or bulky rubbish must be removed by the occupant before moving out. Kitchens and bathrooms are to be left clean. Communal areas are cleaned up to twice a week by F+U.

Laundry facilities and cooking utensils

- Halls of residence/apartments:** Washing machines and tumble dryers are provided.
- Bed linen and towels:** Bed linen is provided on arrival only; please bring your own towels.
- Cooking utensils, cutlery and crockery** can be hired for a deposit of €40 plus a service charge of €25, subject to availability (the deposit is refunded upon the return of complete, clean sets).

Rental contract extension, accommodation transfer, cancellation, booking changes (halls of residence, apartments, host families)

Applications to extend the rental period must be made four weeks in advance of the contract's expiry.

An extension of the rental contract for the same room cannot be guaranteed. If, despite compliance with the four-week notice period, the current room or booked category has already been reallocated, we guarantee the availability of a room in an alternative hall of residence or in another category. In this instance, the fee for changing accommodation will be waived. Extension requests received less than 14 days before contract expiry are subject to a processing fee of €50.

Accommodation transfer (at own request): €60

Cancellation of the rental contract: If the contract parties conclude a rental contract for a fixed term, any earlier ordinary cancellation of the rental contract is generally excluded (§ 542 II BGB - German Civil Code). However, as a gesture of goodwill we permit the cancellation of the rental contract subject to the following conditions of notice:

- By Tuesday, 15.30 after moving in: Cost: one week's rent.
- After this time, cancellation is only possible with four full rental weeks' notice (Sunday to Saturday), plus a €75 cancellation fee.
- The administration fee is non-refundable.

If a cancellation is confirmed by F+U, rent prepaid for the period after the amended contract expiry will be refunded, minus the fees listed in points a, b and c above. Notice of the cancellation must be submitted in writing during accommodation department opening hours (room 10, Monday to Friday, 12.15-15.30).

Changes to bookings for accommodation with host families or in halls of residence are possible subject to availability and a notice period of two weeks.



Accommodation prices

Halls of residence, apartments

Discount promotion: Rent a room for 25 weeks and pay only 17 weeks. Save up to 2080€.

Ask today for information about our 2020 discount campaigns: languages@fuu.de

Requirements:

- The rooms can only be rented in **combination with a language course** of at least 20 lessons per week.
- **Rental period:** at least 25 weeks, maximum rental period 40 weeks.
- For 25 weeks rental you only pay 17 weeks in advance.
- Cancellation is not possible during the first 25 weeks of the rental period. After that a cancellation period of 4 weeks applies. As usual there is a cancellation fee of 75€. We also charge an additional administration fee of 80€.
- **Latest possible start** of the rental period is 18 October 2020.

Administration fee: €80; deposit: €150.

Double room bookings are only available for learners arriving together. **Discount for groups of 10 people or more:** 5% off the listed price. All halls of residence have a **kitchen**.

Booking a residence category: First, please book your preferred residence category only. Approximately two weeks before your arrival - at the latest by Monday before your arrival - you will be informed of the name of your hall of residence.

Guaranteeing a specific hall of residence: For a one-off supplement of €200 (€360 for female-only halls of residence) we guarantee allocation of your preferred hall of residence, subject to room availability at the time of booking.

Postponed arrival: Should your arrival be postponed, e.g. due to a delay in issuing a visa, and if the accommodation is booked to capacity, the originally booked room/residence category can no longer be guaranteed. In this case we reserve the right to offer accommodation in another hall of residence and/or residence category. The price difference resulting from a lower category, and the guarantee fee (where applicable) will be fully refunded. There is no extra charge if an upgrade is necessary! The only possible exception to this rule is if the rent for the booked room is paid from the original moving in date. Cancellation of the accommodation with full refund of the rent already paid is also possible, provided the cancellation is made within 24 hours of moving in.

Cat.	Description	Hall of residence, apartments	Rent per week / room ^{1,2}						Extra day ³ Rent per day/room	
			1-4 weeks		5 - 11 weeks		From 12 weeks		SGL	DBL
			SGL	DBL	SGL	DBL	SGL	DBL		
I	Halls of residence in categories I and II differ in their location and in the quality of furnishings in their rooms and communal areas. Shower and WC located on the corridor. Shared kitchen.	2, 4	€ 130	€ 200	€ 115	€ 175	€ 105	€ 165	€ 45	€ 65
II		1, 4, 5, 6, 7, 8, 9	€ 145	€ 215	€ 140	€ 205	€ 125	€ 180	€ 50	€ 60
		Römer female-only residence (7)	One-time supplement: € 360							
III	En suite shower and WC. Shared kitchen.	6, 7 ⁶ , 8	€ 190	-	€ 170	-	€ 140	-	€ 55	-
IV	Halls of residence are located in Heidelberg Old Town, near the school. Shower and WC located on the corridor. Shared kitchen.	10, 11	€ 230	€ 345	€ 195	€ 290	€ 150	€ 220	€ 60	€ 85
		APO female-only residence (10)	One-time supplement: € 360							
V	Good residential area (Bergheim and Old Town), small apartments with 1 or 2 rooms. Kitchenette en Suite ^{4,5}	11, 13	€ 265	€ 420	€ 225	€ 365	€ 175	€ 275	€ 70	€ 95
Cat. Female-only hall of residence										
II + III	Römer	7	One-off supplement: € 360							
IV	APO	10								

¹The respective room discount applies only for advance payment of at least 5 weeks.

²The rental contract can be cancelled with a notice period of four full weeks and payment of a €75 cancellation fee (see page 33).

³Extra days are invoiced for arrival on Saturday or departure on Sunday (all extra days must be confirmed by F+U).

⁴The F+U Campus residence is a new building; 150 apartments are available to our learners.

⁵The two-room apartments can accommodate up to four people. Supplement for a third person: €150/week; for a fourth person: €125/week.

⁶The category III rooms in the Römer hall of residence have their own WC; the shower is shared with another F+U student.



Categories and locations

Categories and locations of halls of residence

Cat.	No.	Name	District
I	2	Emmertgrund	Emmertgrund
	4	Schmitt	Kirchheim
II	1	Concordia	Südstadt
	4	Schmitt	Kirchheim
	5	Albert Fritz	Kirchheim
	6	Carl-Bosch	Weststadt
	7	Römer (female-only residence)	Rohrbach
	8	Turner	Rohrbach
	9	Wieblingen	Wieblingen

Please note:

The halls of residence are available to our learners all year round. However, due to the exceptionally high demand, we recommend booking accommodation at least four weeks in advance, as well as for the entire duration of your language course. During the summer, if accommodation in a category is fully booked, we reserve the right to allocate a room of the same standard in external halls of residence.

Cat.	No.	Name	District
III	6	Carl-Bosch	Weststadt
	7	Römer (female-only residence)	Rohrbach
	8	Turner	Rohrbach
IV	10	APO (female-only residence)	Old Town
	11	März	Old Town
V	11	März	Old Town
	13	F+U Campus (residence, boarding school)	Bergheim (by railway station)

Room changes:

Occasionally, for reasons such as group arrivals, renovation work and postponed arrivals caused by visa delays, we may be unable to guarantee occupation of the same room for the entire duration of your language course. We hope you will understand if, in such circumstances, we need to offer an alternative room in a hall of residence in the same category. We would like to remind you that the accommodation confirmation refers only to the specified category, not to a specific hall of residence or room.



F+U Campus hall of residence, category V



F+U Campus hall of residence, category V



F+U Campus hall of residence, category V



F+U Campus hall of residence, category V



Concordia hall of residence, category II



Römer hall of residence, category II + III



Römer hall of residence, category II + III



Carl Bosch hall of residence, category II + III



APO female-only hall of residence, category IV





F+U International Boarding School

- For young people aged 14 and over • 24-hour supervision
- Individual support • Pedagogically qualified staff
- Spacious twin rooms with own shower and WC
- Internet connection • Full, varied leisure programme
- 24/7 telephone service • Participation in language courses at the F+U Academy of Languages or school programmes at the Heidelberg Private School Centre



Tel. +49 6221 912035 • Fax +49 6221 23452 • boardingschool.hd@fuu.de • boardingschool.fuu.de

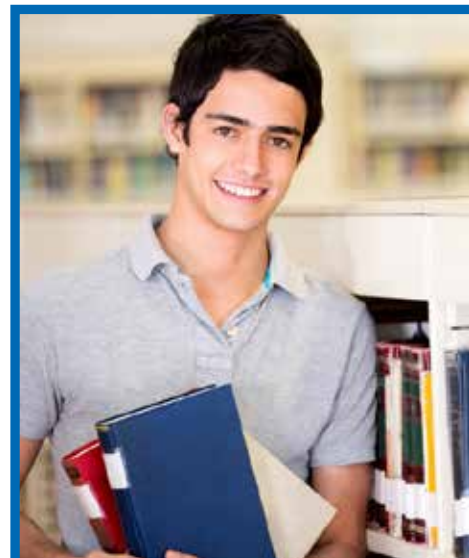


International Baccalaureate®

- Two-year programme from Year 11 • IB® Prep Years from Year 9 • Internationally recognised certificate, paving the way to studies at the world's top universities • Taught in English
- Internationally orientated curriculum • Essay writing and project work • Comprehensive study and careers advice



Tel. +49 6221 7050-4124 • Fax +49 6221 23452 • ibdp.hd@fuu.de • international-baccalaureate.fuu.de



Heidelberg Private School Centre

- Bilingual primary school • Realschule secondary school
- Vocational Gymnasium secondary school
- Bilingual Gymnasium secondary school
- Vocational colleges
- International Baccalaureate® diploma programmes
- IB® Prep Years



Tel. +49 6221 7050-4038 • Fax +49 6221 7050-341 • heidelberg@fuu.de • www.hpc-schulen.de

BA Business Administration

in 10 specialisations (Hotel and Tourism; Sports Management and many more)

BA International Management

BSc Business Informatics

MA Business Management & Development

MA Organisation Development & Business Coaching

DUAL WORK-STUDY | FULL-TIME STUDY | DISTANCE LEARNING

- Entry possible with basic German skills (A2)
- No tuition fees in the dual work-study programme*
- Wide range of cooperating companies in the dual work-study programme
- Individual support, career service
- Study in the heart of the capital city, with the language school under the same roof

*Tuition fees are usually covered by the cooperating company



hwtk University of Applied Sciences

hwtk | Bernburger Str. 24-25 | 10963 Berlin | Tel. +49 30 206 176-63 | info@hwtk.de



STUDY | WORK | BE SUCCESSFUL

Dual bachelor degree programmes for international students



Business Administration* Business Administration with intercultural skills

in 13 specialisations

Social Pedagogy & Management

Social Pedagogy, Manage- ment & Business Coaching**

Engineering & Management*

Physiotherapy

Applied Therapeutic Sciences – Occupational Therapy

*Entry with basic German (A2) possible
**in accreditation

iba
UNIVERSITY
of Cooperative Education

Work and Study
in Germany

- › Study and work every week
- › 0,- € fees for students; usually covered by partner company

+49 162 2933320
international@ibadual.com

ibaDual.com



Technical College Centre

Nursing care - Healthcare - Education - Social care

- Geriatric nurse • Geriatric care assistant • Nursing specialist
- Workplace education instructor • Workplace education teacher
- One-year Vocational College of Social Education • Educational support worker¹ • Educational support worker specialising in youth and residential care¹ • Healthcare educationalist¹ • Healthcare support worker • Physiotherapist¹ • Occupational therapist¹

¹New! Two qualifications in just four years:
Technical college qualification - bachelor degree

FU Fachschulzentrum

Tel. +49 6221 7050-4131 • info@fuu.de • www.fachschulzentrum.de

F+U Studienkolleg preparatory college (accreditation in progress)

The F+U Group gGmbH plans to establish a Studienkolleg preparatory college, with an anticipated starting date of the summer semester 2020. The Studienkolleg will prepare applicants with a foreign university entrance qualification that is not equivalent to a German Abitur for degree programmes at a German university. The programme lasts two semesters and, depending on the focus, consists of 28 to 32 teaching hours per week.

Depending on the applicant's choice of degree subject, the following specialisation courses will be available:

- T-course (for mathematical, scientific or technical programmes)
- W-course (for economics and social science programmes)
- M-course (for medical, biological and pharmaceutical programmes).

Upon successful attendance of the Studienkolleg, and if the specialisation course corresponds to the preferred degree subject, the applicant will be offered a degree programme place at one of the F+U Group's private universities - hwtK | Hochschule für Wirtschaft, Technik und Kultur (University of Applied Sciences for Business, Technology and Culture) or iba | International Berufsakademie (International University of Cooperative Education).

Prerequisite for participation:

- Proof of university entrance qualification in the applicant's home country
- Proof (certificate) of completed B1 German language skills
- Proof of appropriate knowledge of German and mathematics

Intended course location: Staßfurt (S-A), with further course locations planned in Magdeburg, Heidelberg and Chemnitz-Einsiedel.

Registration fee (incl. fee for entrance exam): € 250

Type of course	Duration	Starting date	Course fee
Studienkolleg (T-course)	2 semesters	Expected from SS 2020	€ 6200
Studienkolleg (W-course)	2 semesters	Expected from SS 2020	€ 6200
Studienkolleg (M-course)	2 semesters	Expected from SS 2020	€ 6200

Subject to changes

Preparation for German Studienkolleg entrance exams

F+U offers intensive group courses preparing for entrance examinations for German Studienkolleg courses in German and mathematics. During the course students learn strategies and techniques required for effective and successful completion of the examination tasks.

Prerequisite for participation: Proof of completed B1 language skills of German; candidates who are yet to meet the language requirements can gain the necessary language skills in one of our in-tensive courses (see page 18).

Course location: Heidelberg; online courses on request.

Course no.	Course title	TH / wk	Learners	Course times (Mon - Fri)	Course duration	Course start ¹	Course fee
26 a	Preparation for the Studienkolleg entrance examination (incl. 40 TH mathematics, 40 TH German)	20	10-20	13:00-16:15	4 weeks	07.01; 06.07	€ 700

¹Subject to changes



★ State-recognised vocational college for foreign languages - full-time programmes in Heidelberg

Vocational training in foreign languages opens up diverse, stimulating and above all future-proof career prospects. In addition to the foreign language qualification programme you are also offered training leading to qualifications in commerce, IT and administration. These interdisciplinary qualifications are highly sought after in commerce, in national and international organisations and academic institutions, as well as in the service sector. The Multilingual Correspondence Clerk (Welthandelskorrespondent*in) programme deserves a special mention: students learn four languages within two years, and gain language skills at levels B1 to C1 or higher.

Registration fee: €100.

The **examination fees** and cost of **course material** are not included in the quoted course fees.

The following languages are **state recognised:** Chinese, English, French, Japanese, Russian and Spanish.

For all other languages we recommend the following examinations: **IHK** (Chamber of Trade and Commerce), **TestDaF**, **telc C1 or C1 Hochschule**, **telc C2, DSH** (German).

Start: 14.09.2020

Entry requirements: Intermediate secondary school certificate, German language skills at level C1 and English language skills at level B1 (language competence certificates should not be more than two years old).

Programme funding: Student-BaföG, student loan, child benefit, instalment payments

Training programme / language(s)	Fee ¹	Duration	Start	TH / week
Foreign Language Correspondence Clerk (one language) English	€ 3257	1 year	September	25
Foreign Language Correspondence Clerk (two languages) English and French, Spanish or German as a foreign language	€ 6846	1.5 years	September	30
Foreign Language Correspondence Clerk (two languages) English and Chinese, Japanese or Russian	€ 7728	2 years	September	30
Foreign Language Correspondence Clerk (three languages) English and French or Spanish + Chinese, Japanese or Russian	€ 8722	2 years	September	35
European Secretary (three languages) English + French + Spanish	€ 8280	2 years	September	35
Multilingual Correspondence Clerk (four languages) English and French and Spanish + Chinese or Japanese or Russian	€ 9936	2 years	September	40

¹Payment by instalment is possible; information is available on request.

²German as a foreign language: additional module; in-house examination.

Preparatory course: German as a foreign language

Prospective students with language skills lower than German C1 and / or English B1 have the possibility to complete a preparatory course ahead of the training programme in order to achieve the required language level (German C1 and/or English B1).

Semester one: German as a foreign language

Entry level: A1, **target level:** B2, **duration:** 30 weeks at 30 teaching hours (TH) per week, **start:** Always on the first Monday in September.

If you have knowledge of German, you can join the appropriate course level on the first Monday of every month, throughout the year.

Fee: €4,050 (excluding the cost of books).

For mid-course entry, the fee is lower, taking into account the existing language level and shorter duration of the course; see the fees table on page 18.

Time	Monday	Tuesday	Wednesday	Thursday	Friday
09:00-10:30	German	German	German	German	German
10:45-12:15	German	German	German	German	German
13:00-14:30	German	German	German	German	German

Semester two: German as a foreign language + other foreign languages

Entry level: B2 / C1, **duration:** 16 weeks of 35 TH per week, **start:** Always on the first Monday in September.

If you have knowledge of German, you can join the appropriate course level on the first Monday of every month, throughout the year.

Fee: €2,775 (excluding the cost of books).

For mid-course entry, the fee is lower, taking into account the existing language level and shorter duration of the course; see the fees table on page 18.

Time	Monday	Tuesday	Wednesday	Thursday	Friday
08:00-08:45	Writing skills	Writing skills	Writing skills	Writing skills	Writing skills
09:00-10:30	German	German	German	German	German
10:45-12:15	German	German	German	German	German
13:00-14:30	Commercial correspondence	Business German	Business German	Commercial correspondence	Business German

Preparation for English level B1: Please see the courses on page 20.

F+U course / exam planner and events calendar Heidelberg

January	February	March	April	May	June	July	August	September	October	November	December
01 Wed* New Year's Day	01 Sat TOEFL® IELTS	01 Sun	01 Wed	01 Fri* Workers' Day	01 Mon* Whit Monday 23	01 Wed	01 Sat	01 Tues	01 Thu	01 Sun	01 Tues
02 Thu	02 Sun	02 Mon 10	02 Thu	02 Sat	02 Tues	02 Thu	02 Sun	02 Wed	02 Fri	02 Mon 45	02 Wed
03 Fri	03 Mon TestAS 6	03 Tues TestAS	03 Fri	03 Sun	03 Wed TestDaF	03 Fri	03 Mon 32	03 Thu	03 Sat* Day of German Unity	03 Tues	03 Thu
04 Sat IELTS	04 Tues FSK oral exams	04 Wed	04 Sat TOEFL® telc	04 Mon 19	04 Thu	04 Sat	04 Tues	04 Fri	04 Sun	04 Wed	04 Fri
05 Sun	05 Wed	05 Thu	05 Sun	05 Tues	05 Fri	05 Sun	05 Wed	05 Sat IELTS	05 Mon 41	05 Thu	05 Sat
06 Mon* Three Kings 2	06 Thu	06 Fri	06 Mon 15	06 Wed	06 Sat TestAS IELTS	06 Mon 28	06 Thu	06 Sun	06 Tues	06 Fri	06 Sun
07 Tues	07 Fri	07 Sat TOEFL® telc	07 Tues	07 Thu	07 Sun	07 Tues	07 Fri	07 Mon 37	07 Wed	07 Sat	07 Mon 50
08 Wed	08 Sat IELTS telc	08 Sun	08 Wed	08 Fri	08 Mon 24	08 Wed	08 Sat telc	08 Tues	08 Thu	08 Sun	08 Tues
09 Thu	09 Sun	09 Mon 11	09 Thu	09 Sat telc	09 Tues	09 Thu	09 Sun	09 Wed	09 Fri	09 Mon 46	09 Wed
10 Fri	10 Mon 7	10 Tues	10 Fri* Good Friday	10 Sun	10 Wed	10 Fri	10 Mon 33	10 Thu TestDaF	10 Sat telc	10 Tues TestDaF	10 Thu
11 Sat TOEFL® telc	11 Tues	11 Wed	11 Sat	11 Mon 20	11 Thu* Corpus Christi	11 Sat telc	11 Tues	11 Fri	11 Sun	11 Wed	11 Fri
12 Sun	12 Wed	12 Thu	12 Sun Easter Sunday	12 Tues	12 Fri	12 Sun	12 Wed	12 Sat telc	12 Mon 42	12 Thu	12 Sat IELTS telc
13 Mon 3	13 Thu TestDaF	13 Fri	13 Mon* Easter Monday 16	13 Wed	13 Sat TOEFL® telc	13 Mon 29	13 Thu	13 Sun	13 Tues	13 Fri	13 Sun
14 Tues	14 Fri	14 Sat TOEFL®	14 Tues	14 Thu	14 Sun	14 Tues	14 Fri	14 Mon FSK starts 38	14 Wed	14 Sat telc	14 Mon 51
15 Wed	15 Sat TOEFL®	15 Sun	15 Wed	15 Fri	15 Mon 25	15 Wed	15 Sat	15 Tues	15 Thu	15 Sun	15 Tues
16 Thu	16 Sun	16 Mon 12	16 Thu	16 Sat TOEFL®	16 Tues	16 Thu	16 Sun	16 Wed	16 Fri	16 Mon 47	16 Wed
17 Fri	17 Mon 8	17 Tues	17 Fri	17 Sun	17 Wed	17 Fri	17 Mon 34	17 Thu	17 Sat	17 Tues	17 Thu
18 Sat TOEFL®	18 Tues	18 Wed	18 Sat	18 Mon 21	18 Thu	18 Sat	18 Tues	18 Fri	18 Sun	18 Wed	18 Fri
19 Sun	19 Wed	19 Thu	19 Sun	19 Tues	19 Fri	19 Sun	19 Wed	19 Sat	19 Mon 43	19 Thu	19 Sat IELTS
20 Mon 4	20 Thu	20 Fri	20 Mon 17	20 Wed	20 Sat TOEFL®	20 Mon 30	20 Thu	20 Sun	20 Tues	20 Fri	20 Sun
21 Tues	21 Fri	21 Sat	21 Tues	21 Thu* Ascension Day	21 Sun	21 Tues	21 Fri	21 Mon 39	21 Wed	21 Sat	21 Mon 52
22 Wed	22 Sat	22 Sun	22 Wed TestDaF	22 Fri	22 Mon 26	22 Wed TestDaF	22 Sat	22 Tues	22 Thu	22 Sun	22 Tues
23 Thu	23 Sun	23 Mon 13	23 Thu	23 Sat	23 Tues	23 Thu	23 Sun	23 Wed	23 Fri	23 Mon 48	23 Wed
24 Fri	24 Mon 9	24 Tues	24 Fri telc	24 Sun	24 Wed	24 Fri	24 Mon 35	24 Thu	24 Sat TestAS	24 Tues	24 Thu Christmas Eve
25 Sat	25 Tues	25 Wed	25 Sat TOEFL® TestAS	25 Mon 22	25 Thu	25 Sat	25 Tues	25 Fri	25 Sun Clocks go back 1 hour	25 Wed	25 Fri* Christmas Day
26 Sun	26 Wed	26 Thu	26 Sun	26 Tues	26 Fri telc	26 Sun	26 Wed	26 Sat	26 Mon 44	26 Thu	26 Sat Boxing Day
27 Mon 5	27 Thu	27 Fri telc	27 Mon 18	27 Wed	27 Sat TOEFL®	27 Mon 31	27 Thu	27 Sun	27 Tues	27 Fri	27 Sun
28 Tues	28 Fri	28 Sat TOEFL®	28 Tues	28 Thu	28 Sun	28 Tues	28 Fri telc	28 Mon 40	28 Wed	28 Sat	28 Mon 53
29 Wed	29 Sat	29 So Clocks go forward 1 hour	29 Wed	29 Fri telc	29 Mon 27	29 Wed	29 Sat IELTS	29 Tues	29 Thu	29 Sun	29 Tues
30 Thu		30 Mon 14	30 Thu	30 Sat TOEFL® IELTS	30 Tues	30 Thu	30 Sun	30 Wed	30 Fri	30 Mon 49	30 Wed
31 Fri		31 Tues		31 Sun Whitsun		31 Fri telc	31 Mon 36		31 Sat		31 Thu New Year's Eve

Legend: Start of course for beginners (learners with existing knowledge: every Monday) | Evening course German | Intensive course German | Intensive course English | Medicine course + Business German | Junior courses: summer 06.07-14.08; winter 14-18.12. English holiday course 24-28.02; 14-17.04; 08-12.06; 03-14.08; 26-30.10 | FSK (Foreign Language Correspondence Clerk) exams: 24.06-01.07 (written), 15-17.07 (oral) | TestDaF TOEFL® IELTS | Professional development seminar for German teachers 03-14.08 | Preparation for F+U Studienkolleg admission exam 07.01, 06.07 | Regional event highlights (see page 8) | F+U cultural programme highlights (see page 8) | Japan seminar | *Public holiday - no lessons

Subject to change. No guarantees.



Winter in Heidelberg

Participant statistics

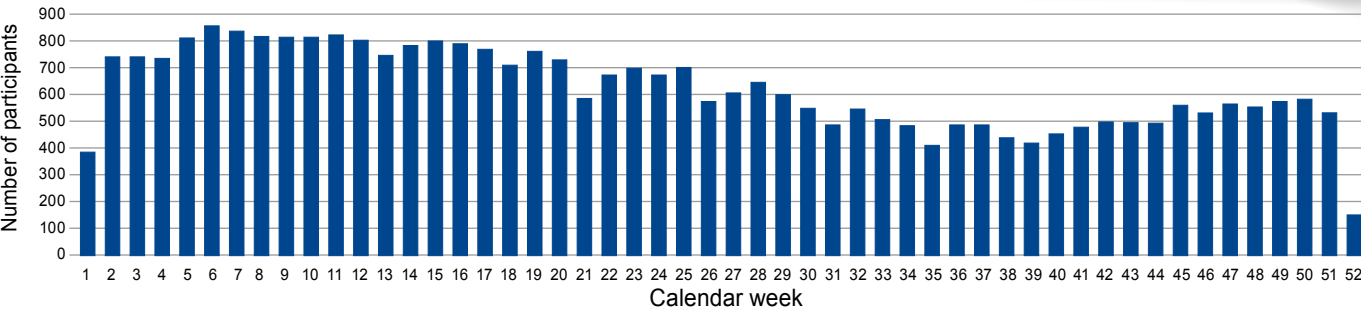
In 2018 an average of 850 learners per week took part in our language courses (main, module and evening courses, as well as individual lessons), in training programmes offered by our vocational college for foreign languages and in our company training. Over the year, about 8,500 learners participated in our language programmes. The average course duration was 5.2 weeks. Meanwhile, language tests were taken by approximately 2,340 candidates. In total, around 10,840 learners completed courses and exams at our language school in 2018. Participants came from 116 different countries.

Participants in our language courses (German, English, Japanese and more): 8,500

Germany	920	Italy	355	Switzerland	140	Bulgaria	98
People's Republic of China	530	Spain	350	USA	138	Brazil	95
Mexico	375	Russian Federation	275	Israel	105	Syria	85
Japan	370	Tunisia	245	South Korea	103	Cyprus	84
Turkey	360	India	175	Ukraine	100	Mauritius	62

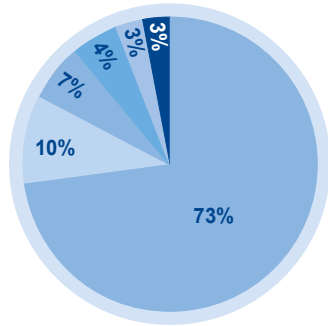
96 other countries: Afghanistan, Albania, Algeria, Angola, Argentina, Armenia, Australia, Azerbaijan, Bahrain, Bangladesh, Belarus, Belgium, Bolivia, Bosnia and Herzegovina, Bulgaria, Cambodia, Cameroon, Canada, Chile, Colombia, Croatia, Cuba, Czech Republic, Denmark, Dominican Republic, Ecuador, Egypt, Eritrea, Ethiopia, Georgia, Germany, Greece, Guatemala, Guinea, Hungary, Indonesia, Iraq, Ireland, Ivory Coast, Jamaica, Jordan, Kazakhstan, Kenya, Republic of Kosovo, Kuwait, Kyrgyzstan, Latvia, Lebanon, Libya, Lithuania, Luxembourg, Macedonia, Malaysia, Moldova, Mongolia, Montenegro, Morocco, Mozambique, Myanmar, Netherlands, New Zealand, Nicaragua, Nigeria, Norway, Pakistan, State of Palestine, Paraguay, Peru, Philippines, Poland, Portugal, Qatar, Romania, Saudi Arabia, Serbia, Slovakia, Somalia, South Africa, Sri Lanka, Sudan, Sweden, Taiwan, Tanzania, Thailand, Togo, Trinidad and Tobago, Turkmenistan, Uruguay, United Arab Emirates, United Kingdom, Uzbekistan, Venezuela, Vietnam, Yemen.

Number of course participants by calendar week - Main, module and evening courses plus individual lessons



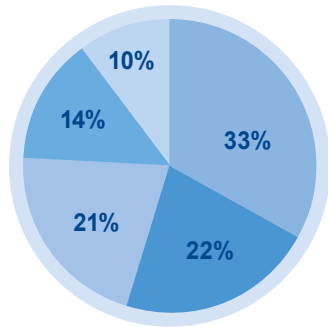
The most popular courses

Intensive course German	73%
Intensive course English	10%
Evening courses	7%
Individual lessons	4%
Professional foreign languages	3%
Junior courses	3%



Examination candidates

TestDaF	774	33%
Telc	512	22%
TestAS	492	21%
TOEFL, IELTS	324	14%
LCCI, TOEIC, ECDL, in-house tests, OnSET	238	10%
Total	2,340	100%





Our language school is located in the Darmstädter Hof Centrum, Hauptstrasse 1, 3rd floor.



Contact

F+U Rhein-Main-Neckar gmbH

Academy of Languages

Hauptstrasse 1, D-69117 Heidelberg

Tel.: +49 6221 7050-4048

Fax: +49 6221 23452

24/7 telephone service:

+49 6221 9120-38

languages@fuu.de

www.fuu-heidelberg-languages.eu

www.fuu.de



Language courses in Heidelberg

Arabic, Brazilian Portuguese, Bulgarian, Chinese, Croatian, Czech, Dutch, English, French, German, Greek, Hungarian, Italian, Japanese, Polish, Portuguese, Romanian, Russian, Spanish, Swedish, Turkish and more

International test centre

TestDaF, telc, TOEFL®, TOEIC®, LCCI, IELTS, ECDL, OnSET, TestAS and more

State-recognised vocational college for foreign languages

Foreign Language Correspondence Clerk, European Secretary, Multilingual Correspondence Clerk, Translator

Heidelberg Technical College Centre

Elderly Care Support, Healthcare Support, Occupational Therapy

Academy24

Business Administrator, Business Specialist and more

Heidelberg Private School Centre

Gymnasium and Realschule secondary schools, bilingual primary school, bilingual Gymnasium, vocational schools, International Baccalaureate®

F+U Studienkolleg preparatory college

(accreditation in progress)

Preparation for the Feststellungsprüfung (T course, W course, M course)

International University of Cooperative Education

Bachelor degree programmes in the dual system

University of Applied Sciences for Business, Technology and Culture

Bachelor and master's degree programmes - dual, full-time or distance



Academy of Languages
Heidelberg · Berlin